

# Leda 3200 User Manual



## Leda 3200 User Manual



## **1 INTRODUCTION**

- 1.1 ATTENTION
- 1.2 INSTRUCTIONS OF SAFETY
- 1.3 LEGAL NOTICE
- 1.4 ABOUT DOCUMENT

## **2 BASIC DESCRIPTION**

- 2.1 PACKAGE CONTENTS
- 2.2 BASIC CHARACTERISTICS
- 2.3 MECHANICAL FEATURES
- 2.4 TECHNICAL INFORMATION

## **3 CONNECTION, PINOUT, ACCESSORIES**

- 3.1 SIM CARD INSERT SCHEME
- 3.2 INSTALLING FM3200 DRIVERS
- 3.3 NAVIGATE LED
- 3.4 MODEM LED
- 3.5 STATUS LED
- 3.6 SOCKET 2×3
- 3.7 USB
- 3.8 ACCESSORIES

## **4 FIRMWARE**

## **5 OPERATIONAL BASICS**

- 5.1 OPERATIONAL PRINCIPALS
- 5.2 SLEEP MODE
- 5.3 VIRTUAL ODOMETER

## **6 CONFIGURATION**

- 6.1 CONFIGURATOR
- 6.2 SYSTEM SETTINGS
- 6.3 GPS SETTINGS
- 6.4 GEOFENCE SETTINGS
- 6.5 GSM SETTINGS
- 6.6 GPRS SETTINGS
- 6.7 SMS SETTINGS
- 6.8 SEND PARAMETER SETTINGS
- 6.9 I/O SETTINGS
  - 6.9.1 Monitoring
  - 6.9.2 Event Generating
  - 6.9.3 Hysteresis

## **7 SMS COMMAND LIST**

- 7.1 SMS SETTINGS FOR FM3200
- 7.2 SMS COMMAND LIST
  - getstatus
  - getweektime
  - getops
  - getcfgtime
  - getgps

getver  
getinfo  
getio  
readio #  
setdigout ##  
getparam ####  
setparam #####  
flush #,#,#,#,#,#

## 8 DEBUG MODE

## 9 PARAMETER LIST

### 9.1 GLOBAL PARAMETERS

Record search (ID=105)  
Link timeout (ID=107)

### 9.2 DATA ACQUISITION AND SENDING PARAMETERS

Time based acquire interval (ID=11)  
Distance based acquire interval (ID=12)  
Angle based coordinate acquisition (ID=13)  
Data Send interval (ID=270)  
Minimum records number in packet (ID=232)  
GPRS Enable (ID=240)  
GSM Operator list (ID=271)  
GPRS Data send week time schedule (ID=272)  
SMS Data send week time schedule (ID=273)  
SMS Data send allow (ID=250)  
24 Records time step (ID=274)

### 9.3 SECURITY SETTINGS AND PARAMETERS

SMS User login (ID=252)  
SMS User password (ID=253)  
Server Number (ID=260)  
Authorized Number #1 (ID=261)

### 9.4 GPRS ACCESS AND ADDRESS SETTINGS

APN Name (ID=242)  
APN username (ID=243)  
APN Password (ID=244)  
Data send protocol (ID=231)  
Server IP address (ID=245)  
Server port number (ID=246)

### 9.5 GEOFENCE ZONES SETTINGS AND PARAMETERS

GeoFence border width (ID=20)  
GeoFence Zone #1 Configuration Parameter (ID=30)  
GeoFence x1 (ID=31)  
GeoFence y1 (ID=32)  
GeoFence x2 (ID=33)  
GeoFence y2 (ID=34)  
All the rest zones

### 9.6 SYSTEM PARAMETERS

Sleep mode (ID=000)  
GPS Enable (ID=10)

### 9.7 IO PROPERTIES











IO#1 property parameter (ID=300)  
IO#1 priority (ID=301)  
IO#1 High level (ID=302)  
IO#1 Low level (ID=303)  
IO#1 logic operand (ID=304)  
IO#1 averaging length (ID=305)

## **10 MOUNTING RECOMMENDATIONS**

- 10.1 CONNECTING WIRES
- 10.2 CONNECTING POWER SOURCE
- 10.3 CONNECTING IGNITION WIRE
- 10.4 CONNECTING GROUND WIRE
- 10.5 CONNECTING ANTENNAS
- 10.6 MODULE INSTALLATION

## 1 INTRODUCTION

### 1.1 Attention

	Do not disassemble the device. If the device enclosure becomes damaged in use, isolate the power supply cables at source before unplugging the power supply connector.
	The Leda 3200 is a GSM/GPRS device. All GSM/GPRS devices produce interference that may affect other nearby electronic devices.
	The device must be connected only by qualified personnel.
	The device must be firmly secured in the desired location it is installed in.
	The programming must be performed using a Class II PC (with isolated PSU).
	Do not expose the device to water and humidity.
	Warning! If an incorrect backup battery is used, the device may explode!
	Do not install or handle during a lightning storm.
	The Leda 3200 has a USB interface. Only use cables provided with the device to connect to a PC. Diplomat is not responsible for any harm caused by using the wrong cables.
	Please note that the internal battery must be plugged in for the Leda 3200 to operate with the external power disconnected.

## **1.2 Safety Instructions**

This chapter contains information on how to operate the Leda 3200 safely. By following these requirements and recommendations, you will avoid dangerous situations. You must read these instructions carefully and follow them strictly before operating the device!

The device uses a 10VDC - 30 VDC power supply, consuming no more than 12W. This allows the unit to be installed in 24VDC commercial vehicles without requiring a voltage reducer.

To avoid mechanical damage, it is advised to transport the FM3200 device in an impact-proof package. Before usage, the device should be placed so that its LED indicators are visible, which show the status of operation the device is in.

Before making connections to the vehicle electrics, it is recommended that the battery of the vehicle is disconnected.

When connecting the connection (1x6) cables to the vehicle, the appropriate jumpers of the power supply of the vehicle should be disconnected.

Before removing the device from the vehicle, the 6-way power connector should be disconnected first.

The device is designed to be mounted in a position which is inaccessible to the operator of the vehicle. All related devices must meet the requirements of standard EN 60950-1.

The Leda 3200 is not designed as a navigational device for boats, or in any application where its failure to operate may lead to a life threatening situation.

## **1.3 Legal Notice**

Copyright © 2011 Diplomat. All rights reserved. Reproduction, transfer, distribution or storage of part or all of the contents in this document in any form without the prior written permission of Diplomat is prohibited. Other products and company names mentioned here may be trademarks or trade names of their respective owners.

## **1.4 About This Document**

This document contains information about the specifications, applications, mechanical characteristics, and configuration of the Leda 3200 device.

Acronyms and terms used in document:

- PC – Personal Computer.
- GPRS – General Packet Radio Service.
- GPS – Global Positioning System.
- GSM – Global System for Mobile Communications.
- SMS – Short Message Service.
- AC/DC – Alternating Current/Direct Current.
- Record – A single piece of AVL data stored in FM3200 memory. AVL data contains GPS and I/O information
- AVL packet - Data packet that is being sent to server during data transmission. An AVL packet contains from 1 to 30 records.

## 2 BASIC DESCRIPTION

FM3200 is a terminal with GPS and GSM connectivity, which is able to determine the object's coordinates and transfer them via the GSM network. This device is perfectly suitable for applications which require the accurate location of remote objects. The Leda 3200 features additional inputs and outputs which let you control and monitor other devices on remote objects.

The Leda 3200 also has a USB port for NMEA output and configuration.

### 2.1 Package contents

The Leda 3200 device is supplied to the customer in a cardboard box containing all the equipment that is necessary for operation. The package contains:

- The Leda 3200 device.
- Input and output power supply cable with a 6-way Tyco connector
- GPS antenna
- USB cable

### 2.2 Basic characteristics

GSM / GPRS features:

- Diplomat TM1 dual band module (900/1800 MHz)
- GPRS class 10
- SMS (text, data)

GPS features:

- 50 channel receiver
- NMEA, GGA, GGL, GSA, GSV, RMC, WGS-84 protocol compatible
- -160 dBm sensitivity

Hardware features:

- ARM7 TDMI processor
- 1 MB internal Flash memory
- Built-in movement sensor
- Internal backup battery included

Interface features:

- Power supply: 10VDC to 30VDC @ 12W Max
- USB port
- 2 digital inputs
- 2 open collector outputs
- 3 status LEDs

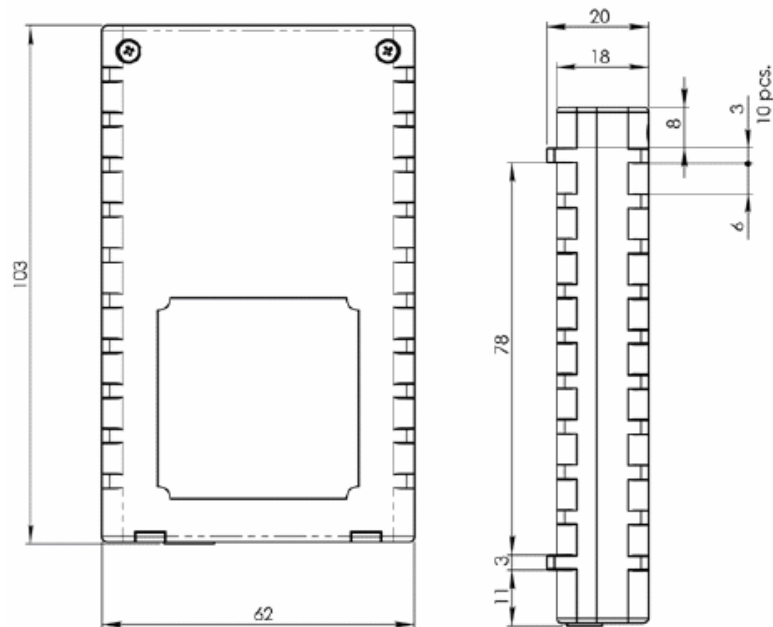
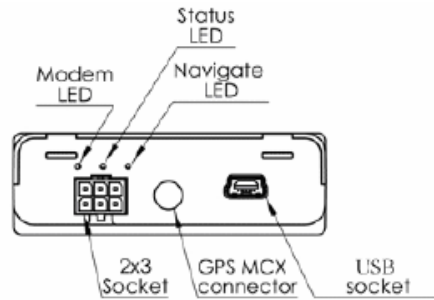
Special features:

- Multiple event triggers (external sensor, input, speed, temperature, etc.)
- Highly configurable data acquisition and sending
- Multiple Geofence areas
- Sleep mode
- Real-time process monitoring
- Authorised number list for remote access
- Firmware updates via GPRS or USB port

- Configuration update via GPRS, SMS or USB port
- TCP/IP or UDP/IP protocol support
- 15000 record storing
- CE and E-mark certified

## 2.3 Mechanical features

- |                             |  |
|-----------------------------|--|
| • GPS Antenna               | MCX, Gold Plated                               |
| • Power I/O                 | Tyco Multi-Lock I/O MK-II C-175975             |
| • USB                       | Mini USB                                       |
| • Power supply              | 10VDC to 30VDC @ 12W Max                       |
| • Energy consumption:       | GPRS: 200 mA r.m.s Max.<br>Sleep: 36 mA r.m.s. |
| • Operation temp.           | -25°C to +55°C                                 |
| • Storage temp.             | -40°C to +70°C                                 |
| • Storage relative humidity | 5% to 95 % (non condensation)                  |



7 **Figure 2. FM3200 view & dimensions**

## 2.4 Technical information:

Operating time with internal backup battery depends on temperature, amount of data sent, and battery age (e.g. number of charge/discharge cycles).

For example:

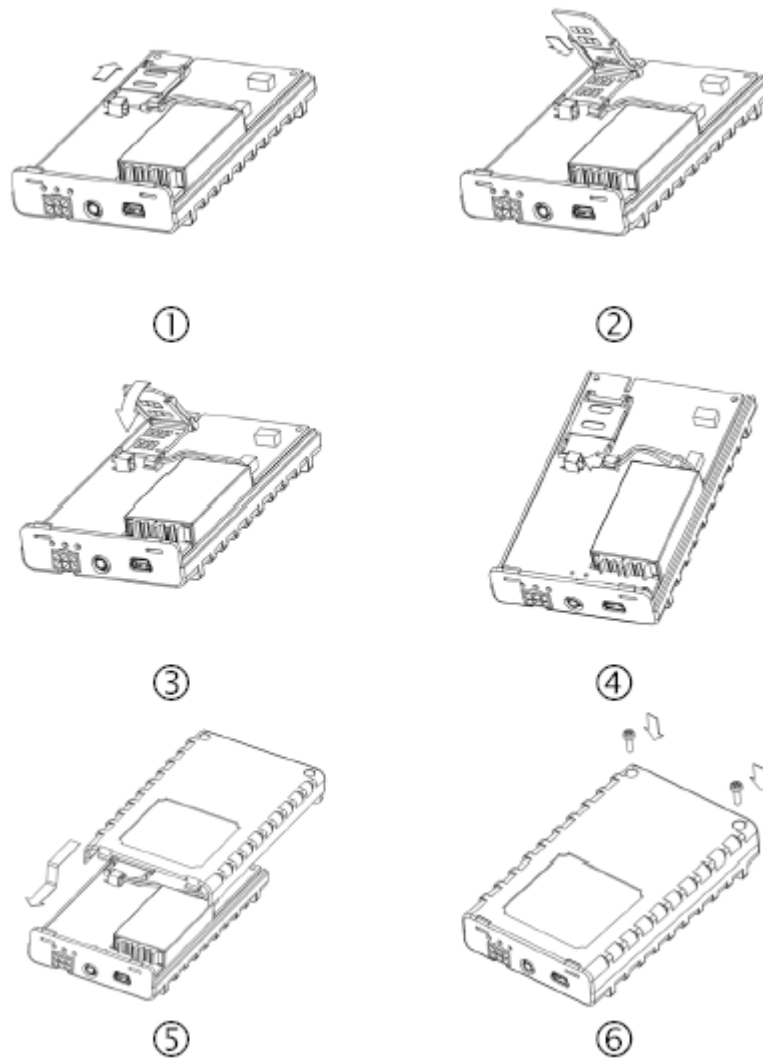
- In sleep mode a new Leda 3200 will give a backup battery operating time of approximately 3hrs 30mins.
- Operating time for a new Leda 3200 device, working in a typical configuration (records acquired every 10 sec and sent in packets of 4 records every 60 sec), will be approximately 2hrs.



Attention! Internal battery must be plugged in, in order for FM3200 to work from backup battery.

## 3 CONNECTION, PINOUT, ACCESSORIES

### 3.1 SIM card insert scheme



1	Open the SIM holder by sliding the cover as shown
2	Slot the SIM card into the cover as shown
3	Close the SIM holder and slide the cover to lock it in place
4	Plug in the backup battery
5	Slide the enclosure together ensuring the lugs engage the slots
6	Insert and tighten the screws (do not overtighten!)

### 3.2 Installing FM3200 drivers

In order to configure the Leda 3200, "MS Windows XP Service Pack 2" or later version of MS Windows must be installed.

#### "MS Windows XP SP2"

Before connecting the Leda 3200 to the computer, the special Hot Fixes must be installed:

- 1) Hotfix KB918365 (usbser.sys 5.1.2600.2930);
- 2) Hotfix KB935892 (usbccgp.sys 5.1.2600.3116).

After installing the HotFixes, reboot your PC.

Power up the Leda 3200 and connect it to the computer. "Found New Hardware Wizard" for "FM32XX Port" will appear. Choose "Install from a list or specific location" (Figure 3) and press "Next".

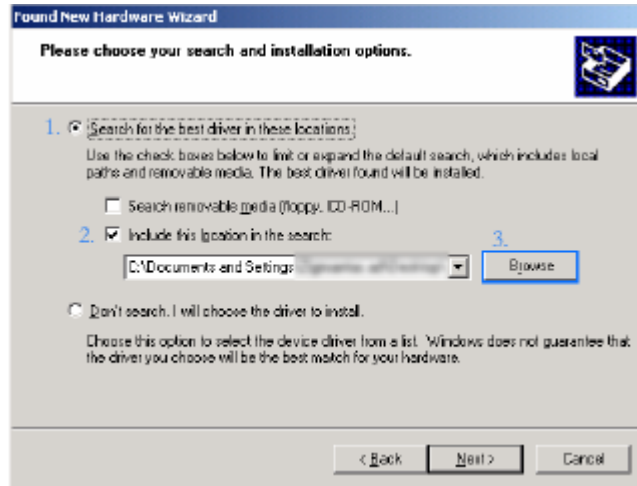


Figure 3. FM3200 installation step 1

In the new window, choose "Search for the best driver in these locations" and check the "Include this location in the search" box. Then click browse and specify the location of the "FM22XX.inf" file, it can be downloaded from

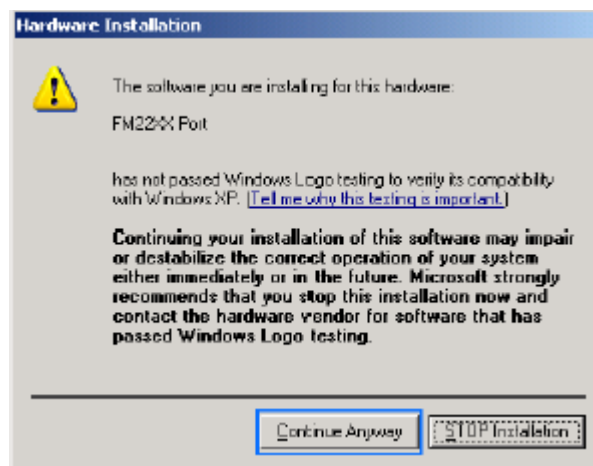
<http://www.diplomat.co.uk/downloads/FM32/FM32XX/FM22XX.inf>

Click "Next".



**Figure 4. Leda 3200 installation step 2**

The warning window will appear, click "Continue Anyway".



**Figure 5. Leda 3200 installation step 3**

Click "Finish".

The installation of "FM32XX Port" is completed. Immediately after the end of the installation, the new wizard for "FM32XX GPS" will appear. Repeat all the steps as in previous installation.

### **"MS Windows XP SP3" and "MS Windows Vista"**

No HotFix installation is required. Proceed with the installation of "FM32XX Port" and "FM32XX GPS".

### **3.3 Navigate LED**

When GPS signal is not received, the Navigation LED is switched on permanently.

When GPS signal is received, the Navigation LED blinks every second:

When FM32XX is operating in Sleep mode Navigation LED is off.

If Navigation LED blinks every 11 seconds, that means GPS antenna or connector is short circuited. Remove the antenna immediately should this occur to prevent damage.

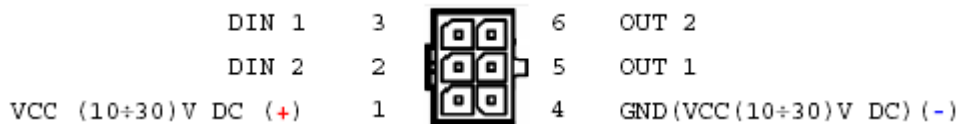
### 3.4 Modem LED

When power is connected to FM3200, modem led is illuminated permanently.

### 3.5 Status LED

If the device is operating correctly the Status LED should blink. If this LED does not blink it means that the device has invalid firmware or other malfunction.

### 3.6 Socket 2x3



**Figure 6. 2x3 socket pinout**

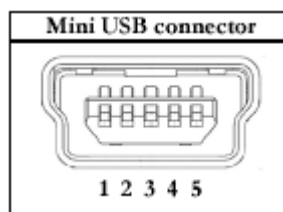
Pin Nr.	Pin Name	Description
1	VCC (10÷30)V DC (+)	Power supply for module. Power supply range (10...30) V DC Energy consumption: GPRS: ≈ 200 mA r.m.s Max., Nominal: ≈ 65 mA r.m.s..
2	DIN 1	Digital input, channel 1*
3	DIN 2	Digital input, channel 2*
4	GND (VCC (10÷30)V DC) (-)	Ground pin. (10÷30)V DC (-)
5	OUT 1	Digital output. Channel 1. Open collector output. Max. ≈ 150mA.
6	OUT 2	Digital output. Channel 2. Open collector output. Max. ≈ 150mA.

**Figure 7. 6-way Tyco Connector Pinout Description.**

**\*Digital input Level <2V = 0 = FALSE**

**\*Digital Input Level > 2.5V < 30 V = 1 = TRUE**

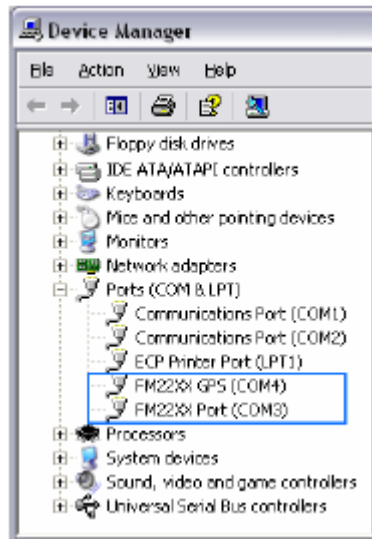
### 3.7 USB



**Figure 8. Mini USB connector**

	<p>The Leda 3200 has an industry standard Mini USB interface connector. A USB to Mini USB lead is supplied with the unit.</p>
--	---

When plugged into a PC, the Leda 3200 creates two COM-Ports: "FM32XX Port", which can be used as system port (to flash firmware and configure the device) and "FM32XX GPS" as a GPS serial output of standard NMEA 0183 data at 9600 baud rate.



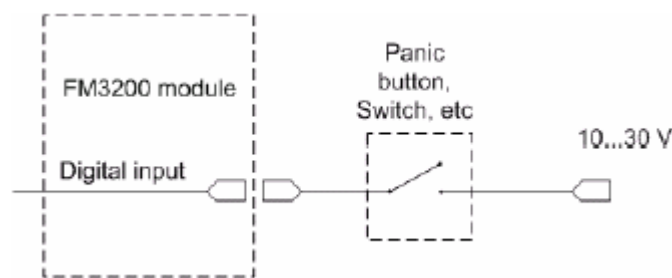
**Figure 9. COM-Ports**

### 3.8 Accessories

Diplomat has a range of approved accessories for Leda Vehicle Trackers including Panic Footswitches, Pushbuttons and Vehicle Immobiliser Kits.

#### Digital Inputs – Panic Buttons, Door Sensors, etc.

The Digital Inputs are either "TRUE" or "FALSE". The inputs of the Leda 3200 are "Active High" as they require a voltage to be applied to them in order for the Leda 3200 to consider an input to be "TRUE". With nothing connected to a Digital Input the Leda 3200 will consider that input to be "FALSE"



**Figure 10. Panic button connection**

To connect a Panic button to the Leda 3200 it is necessary to connect one wire of the button to a permanently available voltage source and the other wire of the button to a Digital Input.

In this way when the button is pressed (i.e. the contact is closed) a voltage gets applied to the input and the Leda 3200 considers the input as being "TRUE". When the button is released, the Leda 3200 considers that input to be "FALSE".

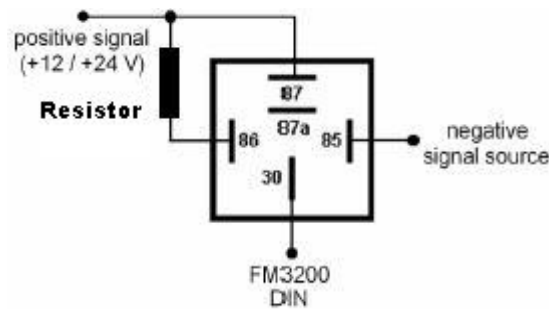
## Ignition Sense In A Vehicle

This is perhaps the most simple condition to sense as the "Accessory" supply in the vehicle (the cable designed to supply vehicle accessories when the ignition key is turned to the ACC position) can be directly connected to the Digital Input.

## Sensing Other Conditions In A Vehicle

Sometimes you might need to sense when a switch contact is closed to ground. In these cases, there may not be an actual voltage that can be sensed. In cases when a vehicle sensor output is a signal that goes to ground (e.g. the battery negative terminal) an additional relay has to be installed to convert this "negative" signal into a positive signal suitable for applying to the Digital Input of a Leda 3200.

Here is a typical arrangement using a relay to overcome the problem:

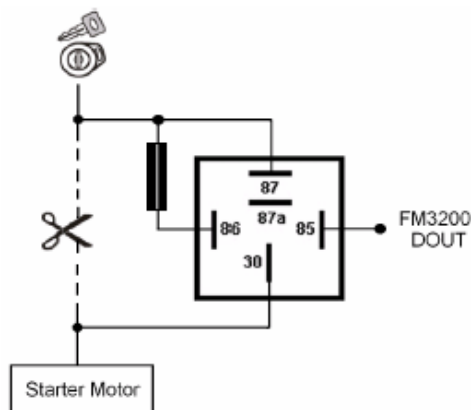


**Figure 11. Inverting relay connection**

## Digital Outputs – Immobiliser Relays, etc.

The Digital Outputs of the Leda 3200 are called "Open Collector" which means that an output is either "Floating" when OFF or "Pulled-To-Ground" when ON.

One method used to immobilise a vehicle is to inhibit the starter motor. When connected as shown below the Leda 3200 disables the engine starter when output is ON. More details about relays can be found below.



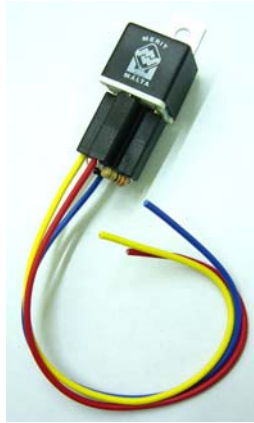
**Figure 12. Immobiliser relay connection**

## Relays

**Important! It has been found that the Digital Outputs of the Leda 3200 may not be able to fully energise some automotive relays!**

**Diplomat supplies approved Immobiliser Relay Kits that specifically include a pre-wired current limiting resistor in series with the coil.**

**Failure to use the Diplomat approved relay kit will result in the relay energizing momentarily and then resetting to a non energized state.**



**Figure 13. Diplomat Approved Automotive Relay**

## 4 FIRMWARE

### Updating firmware using USB cable

The Leda 3200 is an intelligent device and its functionality is always improving. As new firmware versions are released the Leda 3200 can be updated via the USB cable or Over-The-Air via GPRS.

The current firmware version can be read by the configurator application. See configuration description for details. Alternatively, the firmware updater application will also display the current version that is running.

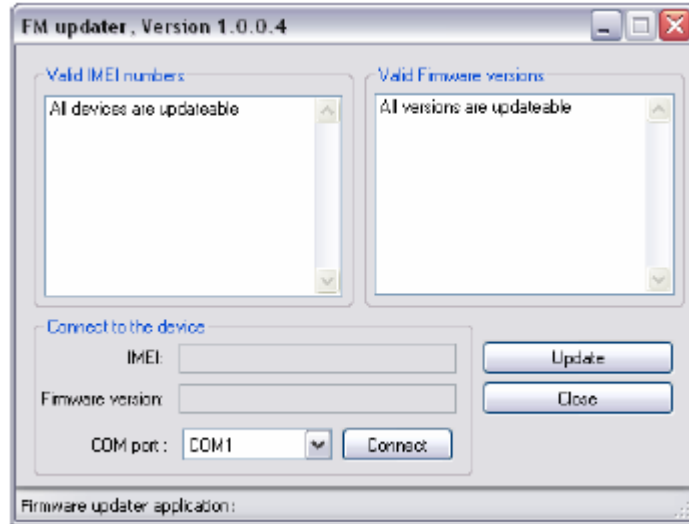
Contact Diplomat Support to obtain the latest firmware.

A special FM Updater PC utility application is required to update the firmware. It can be downloaded from:

[http://www.diplomat.co.uk/downloads/FM32/Updater\\_1.1.0.1.zip](http://www.diplomat.co.uk/downloads/FM32/Updater_1.1.0.1.zip)

Firmware must to be copied to Updater directory.

Connect the Leda 3200 to the PC with the supplied USB cable. Launch the "FM Updater" application, select the correct COM port, click connect and update. The update process may take several minutes.



**Figure 14. FM updater screen**

### Updating firmware via GPRS

Firmware can also be updated via GPRS by commanding the Leda 3200 to connect to a firmware update server.

A special SMS command is sent to the Leda 3200 which includes the IP address and Port number for the Leda 3200 to connect to.

The server details are as follows:

Server IP: 109.200.19.99

Server port: 7037

The firmware update command is described later in this document

## 5 OPERATIONAL BASICS

### 5.1 Operational principals

The Leda 3200 tracking device is designed to acquire records and send them to a server. Records contain GPS and I/O information. The Leda 3200 uses its internal GPS receiver to acquire GPS data based on three data acquire methods: time-based, distance-based and angle-based methods.

The way in which each method works is described in the GPS section of this manual. All data is stored in real-time in flash memory and sent in 'bundles' via GPRS or SMS channels to conserve airtime usage. GPRS mode is the most preferred data sending mode. SMS mode is mostly used in areas without GPRS coverage or when GPRS usage is too expensive.

GPRS and SMS settings are described in the GPRS section. The Leda 3200 communicates with a server using a custom data protocol. The Diplomat Data protocol is described in a separate "protocols" document.

The Leda 3200 can be managed by SMS commands. The SMS Command list is described in SMS COMMAND LIST section. The whole of the Leda 3200's configuration can be performed either via GPRS or via SMS.

## 5.2 Sleep mode

The Leda 3200 can enter sleep mode (standby mode) under two conditions:

- FM3200 does not detect movement.
- FM3200 does not send or receive any data for 5 minutes. This means that if coordinate recording interval is less than 5 minutes, FM3200 will never enter sleep mode.

The Leda 3200 exits sleep mode when it detects movement again.

While in sleep mode, the Leda 3200 instructs its internal GPS receiver to enter a low-power sleep mode which means it will not generate any location data. The corresponding decrease in power usage reduces drain on the vehicle battery.

## 5.3 Virtual odometer

The Leda 3200 uses a "Virtual Odometer" to calculate travelled distance as a separate I/O element.

When the Leda 3200 detects movement, it starts counting distance using the GPS signal: every second it checks current location and calculates distance between the current and the previous point. It keeps adding these intervals until it is time to make a record, then the Leda 3200 generates a record containing its current location and the current odometer value, which is equal to the sum of all the distances it has measured.

When the record is made, the Virtual Odometer resets to zero and the distance calculation starts all over again.

Note that the Virtual Odometer works independently of any other records being generated using elapsed time, distance and angle change intervals. Instead, it uses a separate set of virtual points which are established independently every second, and accumulates the distance between them.

# 6 CONFIGURATION

## 6.1 Configurator

A brand new Leda 3200 device has default factory settings. Settings should be changed according to your application and your GSM operator information.

The Leda 3200 configuration is most easily performed via the "FM3200 Configurator" PC application. The latest FM3200 Configurator version can be downloaded from:

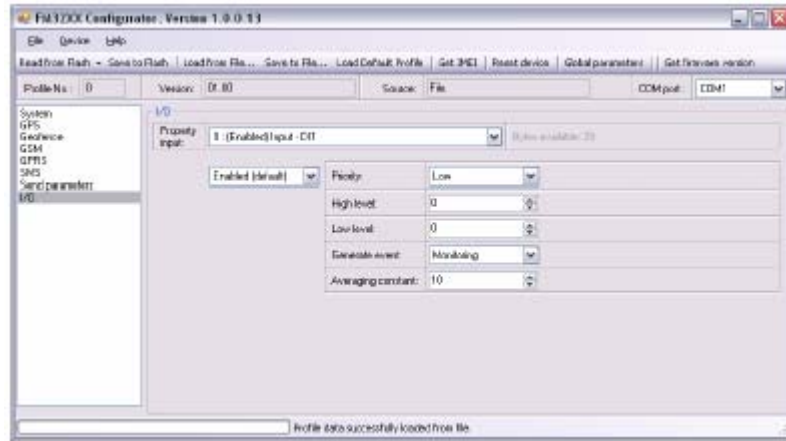
[http://www.diplomat.co.uk/downloads/FM32/FM3200\\_Configurator.zip](http://www.diplomat.co.uk/downloads/FM32/FM3200_Configurator.zip)

The FM3200 Configurator application operates on Microsoft Windows OS and uses MS .Net Framework 2.0 or higher. Please ensure that MS .Net Framework 2.0 or later is installed on your PC before starting configurator. Latest MS .Net Framework version can be downloaded from official Microsoft web page.

Device configuration is performed via the supplied USB cable. Configuration process starts from loading FM3200 Configurator program and selecting COM port.

The Leda 3200 has one user editable profile stored in Flash no. 1 memory and one extra profile stored in Flash no. 0, which cannot be edited by the user. The profile from Flash no. 0 is used by system and cannot be selected as active, while profile from Flash no. 1 is fully editable and can be selected as active.

Changes of profile parameters must be saved to Leda 3200 Flash no. 1.



**Figure 15. Configurator window**

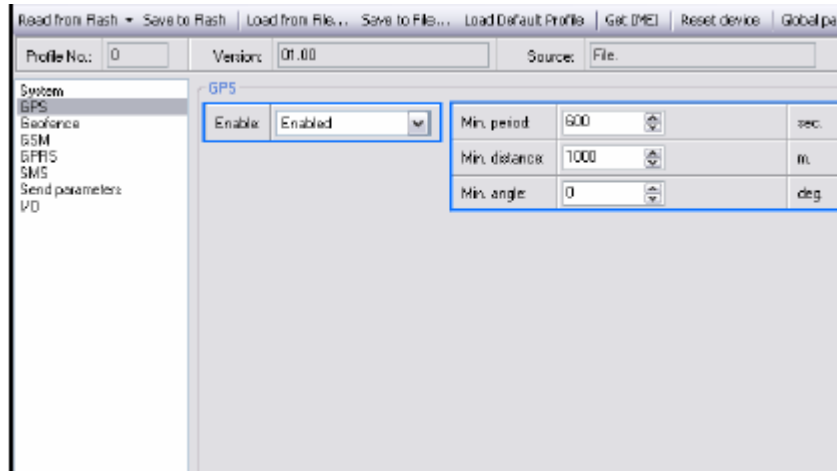
- 'Read from Flash' – reads configuration parameters from Flash memory.
- 'Save to Flash' – saves configuration parameters to Flash memory.
- 'Load from file' – allows user to load configuration saved in .XML extension file.
- 'Save to file' – allows user to save currently entered settings to a file.
- 'Load default profile' – loads default FM3200 settings that later can be modified. This procedure must be performed before entering new parameters.
- 'Get IMEI' – reads FM3200 IMEI number. This number is unique for every FM3200 and usually servers recognize different devices by this number.
- 'Reset device' – reboots FM3200 and displays processor firmware version.
- 'Load CPU FW via PORT ½' – updates the firmware version.

## 6.2 System settings

System settings menu has only one parameter – Sleep mode. It can be enabled or disabled by turning it on or off. See sleep mode description for more details.

## 6.3 GPS settings

GPS settings define GPS data acquiring methods and frequencies.

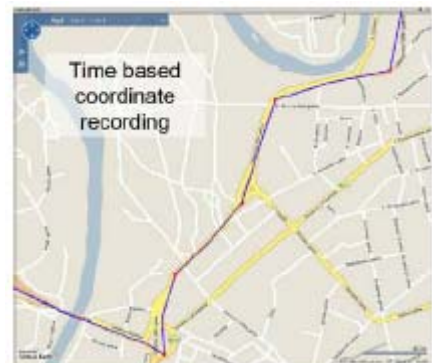


**Figure 16. GPS configuration**

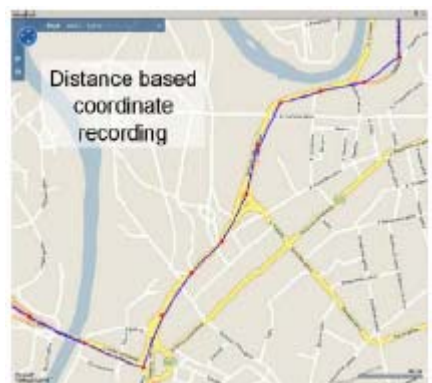
Device is checking if the time between last saved record and current time is equal or higher than Time based acquire interval. If so, FM saves record to memory. If not, FM checks if the distance from last record to current record is equal or higher than Distance based acquire interval. If so, saves the record to memory. If not and speed is higher than 10km/h, then FM is checking if angle difference between last record and current record is equal or higher than Angle based acquire value. If so, saves the record to memory. This check is being performed every second.

FM3200 is able to collect records using three methods at the same time: time, distance and angle based data acquisition:

**Time based data acquiring** (Min. period)  
Records are being acquired every time when defined interval of time passes. Entering zero means that data will be recorded as fast as possible (every second). Entering zero disables data acquisition depending on time.



**Distance based data acquiring** (Min. distance)  
Records are being acquired when the distance between previous coordinate and current position is greater than defined parameter value. Entering zero means that data will be recorded every 0 meters (as fast as possible – every second). Entering zero disables data acquisition depending on distance.



**Angle based data acquiring** (Min. angle)  
 Records are being acquired when angle difference between last recorded coordinate and current position is greater than defined value. Entering zero disables data acquisition depending on angle.

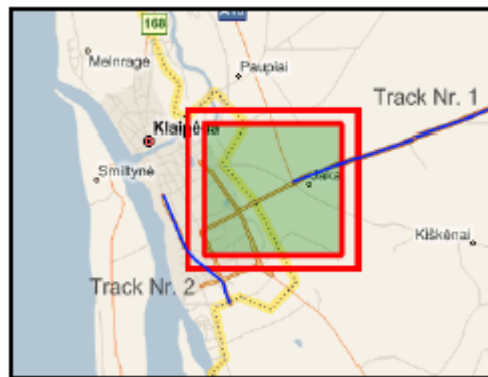


## 6.4 Geofence settings

The Leda 3200 has 5 configurable Geofence zones and it can generate an event when a defined Geofence zone border is crossed.

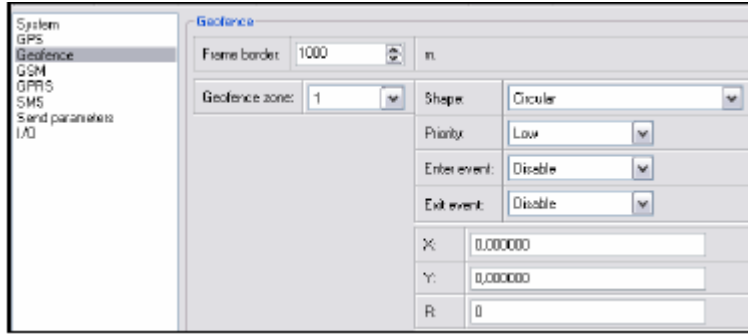
- Frame border – frame border is an additional border around Geofence zone. It is additional area around defined zone used to prevent false event recording when object stops on the border of the area and because of GPS errors some records are made inside area and some outside. This border defines a 'hysteresis' characteristic such that an event is only generated when both borders are crossed.

See Figure 17 below for details: As an example, Track 1 is considered as having entered the Geofence area while Track 2 does not.



**Figure 17. Geofence border**

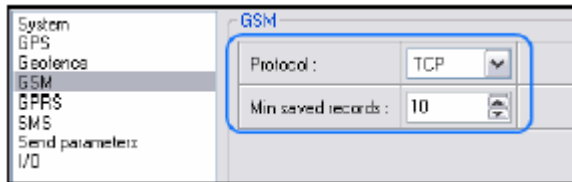
- Shape – can be rectangular or circle
- Priority – priority of Geofence event: low, high or panic. These levels define priority of event information sending to server. See I/O element description for more details about priorities.
- Enter event – enable or disable zone entering event
- Exit event – enable or disable zone leaving event
- X1 – geofence zone left bottom corner X coordinate
- Y1 – geofence zone left bottom corner Y coordinate
- X2 or R – geofence zone upper right corner X coordinate (radius of circle when Circular zone used)
- Y2 – geofence zone upper right corner Y coordinate



**Figure 18. Geofence configuration**

## 6.5 GSM settings

'GSM Settings' allows you to set the exact protocol used for data transfers – TCP or UDP. 'Min Saved Records' defines the minimum number of records (i.e. records of coordinates and I/O data) that should be transferred as a bundle in one single data connection to server. If the Leda 3200 does not have enough coordinates to send to server, it will check the number of accumulated records again after the time interval defined in the 'Send Period' parameter (see section 6.8 below).



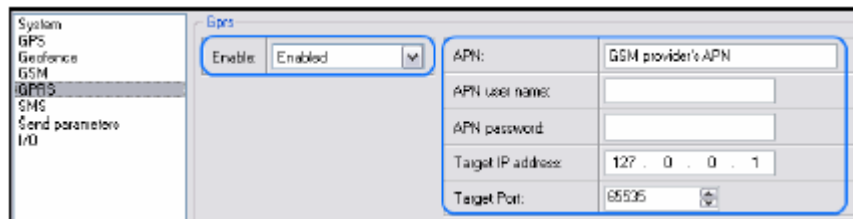
**Figure 19. GSM configuration**

## 6.6 GPRS settings

'GPRS Settings' define important parameters for connecting to a server via GPRS: GSM provider's APN name, APN username and APN password (username and password may be optional according to your provider), the destination server IP address and the port it is listening on.

Some operators use specific authentication for a GPRS session – CHAP or PAP. If one of these is used then the APN name should be entered followed by a colon and the letter 'c' or 'p'. So, for example, if the APN name is 'internet' with CHAP authentication, then enter the APN name as 'internet:c'

Information about APN, username and password credentials should be provided by your GSM operator.



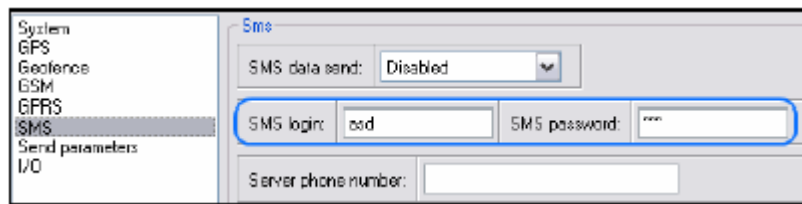
**Figure 20. GPRS configuration**

## 6.7 SMS settings

- SMS data send – enable or disable periodic data and event SMS use. Note, that this does not affect replies to messages – they are always sent to sender’s number.
- SMS send timeout – SMS send timeout (recommended 60 sec.)
- SMS Login – module login for SMS
- SMS Password – module password for SMS
- Server phone number – authorized server phone number for SMS requests, configuration, 24-coordinates and event binary SMS
- Authorised phone numbers – other authorised numbers that are allowed to control the Leda 3200 remotely.



Module login and password, server and authorised number list is used to protect the Leda 3200 device from unauthorised access. Device only accepts messages from a list of authorised numbers and with proper device login and password. Numbers must be without “+” or “00” prefix. If no authorised numbers are entered, Device accepts messages from all numbers. Server phone number automatically counts as an authorised number.



**Figure 21. SMS configuration**

## 6.8 Send Parameter settings

Send parameters window allows to set GPRS and SMS data send periods, sending schedules, set allowed operator list.

- Send period – GPRS data sending to server period. Module makes attempts to send collected data to server every defined period. If it does not have enough records (depends on parameter Min. Saved Records described above), it tries again after defined time interval
- Time step – FM3200 is improved with 24-coordinates-in-one-SMS sending mechanism. 24- coordinates-in-one-SMS mechanism is used in areas where no GPRS coverage is available.

Module collects data and sends to server binary SMS containing information about last 24 collected points with interval between them defined in time step field. SMS sending schedule is set in SMS Week Time tab. 24-Coordinates SMS decoding is described in Protocols” document.

- GPRS Context Week Time tab – most GSM billing systems charge number of bytes (kilobytes) transmitted per session. During the session, FM3200 makes connection and transmits data to a server. FM3200 tries to handle session as much as possible. Session can last hours, days, weeks or session can be closed after every connection in certain GSM networks – this depends on GSM network provider. GPRS Context Week Time defines session re-establish schedule if session was closed by network. New GPRS context is opened if time is 10 minutes till time checked in table. Therefore if all boxes are checked, FM3200 is able to open new connection anytime. At scheduled time match FM3200 checks for GPRS session activity. If

GPRS session is alive, FM3200 sends data to server according to Send period parameter. If it is not, FM3200 checks if it is able to re-establish the session.

- SMS Week Time tab – week time allows setting SMS data sending schedule. SMS mode is mostly used in areas where GPRS is not available.

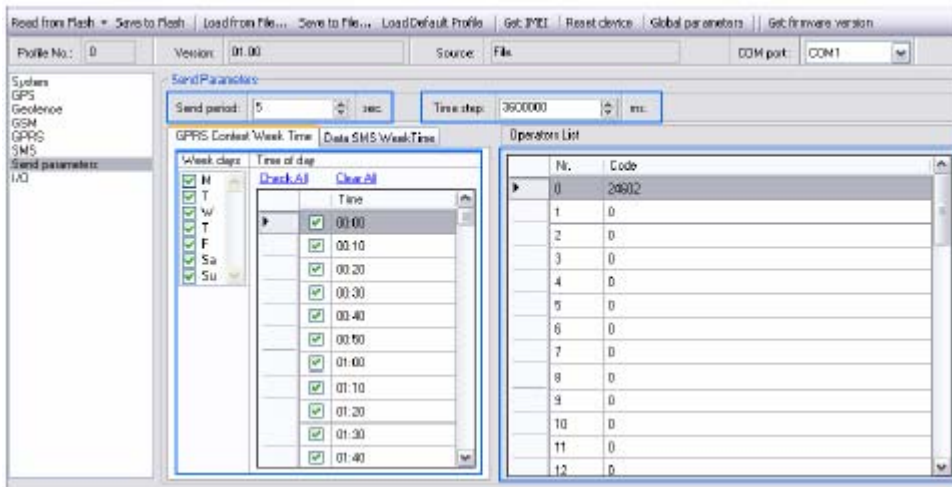
2



Note FM3200 operates GMT time without daylight saving.

4

- Operators list – FM3200 is able to use GPRS with all operators, but if at least one operator is entered in the list, FM3200 is allowed to connect to GPRS only while operating in listed operator's network.



**Figure 22. Send Parameters configuration**

## 6.9 I/O settings

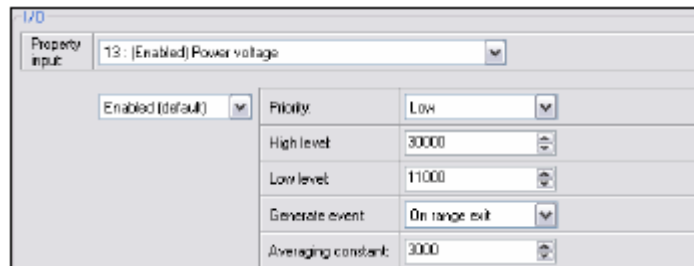
When no I/O element is enabled, AVL packet comes with GPS information only. After enabling I/O element(s) AVL packet in couple with GPS information contains current value(s) of enabled I/O element.

Property ID	Property Name	Bytes	Description
1	Digital Input Status 1	1	Logic: 0 / 1
2	Digital Input Status 2	1	Logic: 0 / 1
24	Speedometer	2	Value in km/h
66	External Power Voltage	2	Voltage: mV
67	Battery Voltage	2	Voltage: mV
68	Battery Current	2	Battery charge current: mA; 0 – if external power off
69	GPS Power	1	GPS antenna states: 0 – short circuit, 1 – connected
70	PCB Temperature	2	10 * Degrees ( °C )
155	Geozone 01	1	Event: 0 – target left zone, 1 – target entered zone
156	Geozone 02	1	Event: 0 – target left zone, 1 – target entered zone
157	Geozone 03	1	Event: 0 – target left zone, 1 – target entered zone
158	Geozone 04	1	Event: 0 – target left zone, 1 – target entered zone
159	Geozone 05	1	Event: 0 – target left zone, 1 – target entered zone
199	Virtual Odometer	4	Distance between two records: m
240	Movement	1	0 – not moving, 1 – moving.
179	Digital output 1 state	1	Logic: 0 / 1
180	Digital output 2 state	1	Logic: 0 / 1
181	PDOP	2	Probability * 10; 0-500
182	HDOP	2	Probability * 10; 0-500
241	Current Operator Code	4	Currently used GSM Operator code

25



There are two types of operations with I/O elements: simple monitoring and event generating. Monitoring method is used when current I/O information needed with regular GPS coordinates. Event generating method is used when additional AVL packet is needed when current value of I/O exceeds predefined High and Low levels. I/O settings allow defining I/O event criteria.



**Figure 23. I/O settings**

- Enabled or disabled field – allows enabling I/O element so it is added to the data packet and is sent to the server. By default all I/O element are disabled and FM3200 records only GPS coordinates.
- Priority – AVL packet priority – low, high or panic. Regular packets are sent as Low priority records. When low priority event is triggered, FM3200 makes additional record with indication that the reason for that was IO element change. When High priority is selected, module makes additional record with high priority flag and sends event packet immediately to the server by GPRS. Panic priority triggers same actions as high priority, but if GPRS fails, it sends AVL packet using SMS mode if SMS is enabled in SMS settings.
- High and Low levels – define I/O value range. If I/O value enters or exits this range, FM3200 generates event. "Generate event" parameter defines when to generate event – when value enters defined range, exits it or both.
- Averaging constant – it is an I/O event delay parameter. In some applications there is no need to generate events on every I/O range enter/exit immediately. Sometimes it is necessary to wait some time interval before event generating. Averaging constant allows to set I/O event delay (averaging). If I/O value is entering or leaving predefined range, it must have same value for Averaging constant time. 1 Averaging constant value equals 20 milliseconds.

## 6.9.1 Monitoring

I/O monitoring starts after enabling I/O element and setting up I/O parameters as it is shown below:

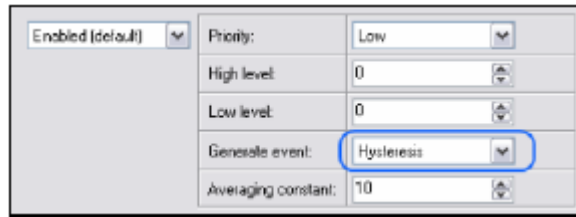
Enabled (default) <input type="checkbox"/>	Priority:	Low
	High level:	0
	Low level:	0
	Generate event:	Monitoring
	Averaging constant:	10

### 6.9.2 Event Generating

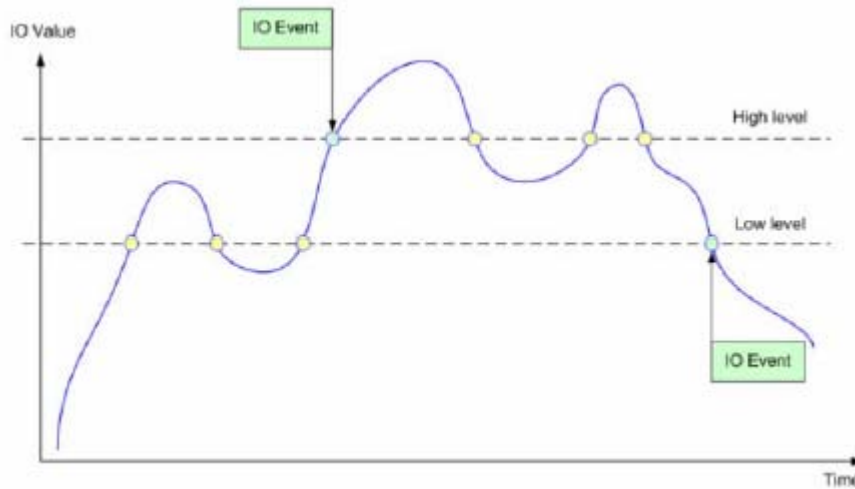
Events happen when the value of enabled I/O intersects thresholds (enter, exit or on both) predefined by High and Low level thresholds. Table below defines all available values of I/O settings.

Priority	low, high
High level	maximum threshold
Low level	minimum threshold
Generate event	on interval enter, on interval exit, on both enter and exit
Average constant	$1 - 2^{32}$ (4 Bytes)

### 6.9.3 Hysteresis



I/O elements can generate events according to hysteresis algorithm. If I/O event operand "Hysteresis" is selected, events will be generated as it is shown in the illustration below:



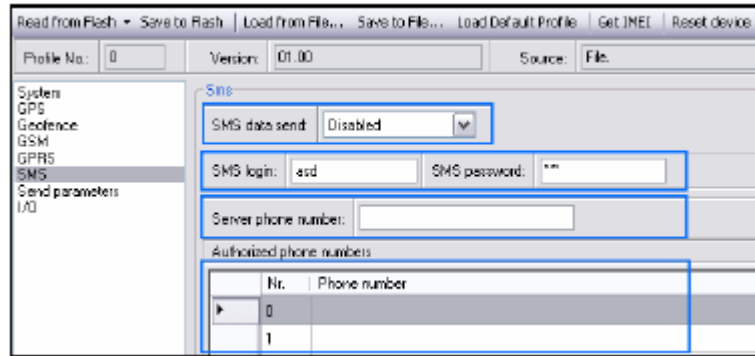
**Figure 24. Event generation according hysteresis algorithm**

## 7 SMS COMMAND LIST

Note: The SMS command list is under constant revision. Please do not assume that this manual is complete or accurate. Commands may change between different software versions.

Please always use the latest Manuals published by Diplomat.

### 7.1 SMS settings for FM3200



**Figure 25. SMS login, password, server phone number and authorized phone number configuration**

Essential fields in 'SMS Settings' are 'Login' and 'Password'. This login and password should be used with every SMS sent to FM3200 as identifiers and means of protection from SMS from unauthorised numbers.

Command structure:

<login><space><password><space><command>

Example:

asd 123 getgps

## 7.2 SMS command list

Command	Description	Response
getstatus	Modem Status information	Yes
getweektime	Current device time, Day of Week and amount of minutes passed since start of week	Yes
getops	List of currently available GSM operator	Yes
getcfgtime	Date and Time of last successful configuration	Yes
getgps	Current GPS data and time	Yes
cpureset	Reset CPU	No
resetprof	Reset all FLASH1 profile to default profile	No
getver	Device / Modem / Code version information	Yes
getinfo	Device runtime system information	Yes

deleterecords	Delete all records saved on FLASH	No
getio	Readout digital inputs and outputs	Yes
radio #	Readout input value according entered ID, # - ID value	Yes
setdigout ##	set digital outputs 0 – OFF, 1 – ON DO1 DO2 DO3 DO4	Yes
getparam #	Readout parameter value according entered ID. # - ID value.	Yes
setparam # #	Set parameter value according entered ID and Value. 1.# - ID value. 2.# - New Parameter Value	Yes
flush #,#,#,#,#,#	Initiates all data sending to specified target server 1.# - IMEI 2.# - APN 3.# - LOGIN 4.# - PASS 5.# - IP 6.# - PORT 7.# - MODE (0-TCP/1-UDP)	No

## Getstatus

Response details	Description
Data Link	Indicate module connection to server at the moment: 0 – Not connected, 1 – connected
GPRS	Indicate if GPRS is available at the moment
Phone	Voice Call status: 0 – ready, 1 – unavailable, 2 – unknown, 3 – ringing, 4 – call in progress, 5 – asleep
SIM	SIM Status: 0-ready, 1-pin, 2-puk, 3-pin2, 4-puk2
OP	Connected to GSM Operator: numerical id of operator
Bat	Battery charge level [0-5]
Signal	GSM Signal Quality [0-5]
Service	
NewSMS	Indicate if new message received
Roaming	0 – Home Network, 1 – roaming
SMSFull	SMS storage is full? 0 – ok, 1 – SMS storage full

*Example: Data Link: 0 GPRS: 1 Phone: 0 SIM: 0 OP: 24602 Bat: 4 Signal: 5 Service: 1 NewSMS: 0 Roaming:0 SMSFull: 0*

29

## getwektime

Response details	Description
Clock Sync	Indicates system clock synchronization status. 0 – System is not synchronized, 1 – System synchronized
DOW	Day Of Week – indicates current day of week starting from 0 – Monday, 1 – Tuesday, etc.
Time	Indicates current GMT time
WeekTime	Indicates time in minutes starting from Monday 00:00 GMT

*Example: Clock Sync: 1 DOW: 4 Time 12:58 Weektime: 6538*

## getops

Response details	Description
LIST	Returns list of current available allowed operators.

*Example: GSM OP LIST: 0. 24602*

## getcfgtime

Response details	Description
Date/Time	Returns last performed configuration date and time.

*Example: Last Configuration was performed on: 2010.4.15 5:45:19*

## getgps

Response details	Description
GPS	Indicates valid (1) or invalid (0) GPS data
Sat	Count of currently available satellites
Lat	Latitude (Last good Latitude)
Long	Longitude (Last good Longitude)
Alt	Altitude
Speed	Ground speed, km/h
Dir	Ground direction, degrees
Date	Current date
Time	Current GMT time

*Example: GPS:1 Sat:7 Lat:54.71473 Long:25.30304 Alt:147 Speed:0 Dir:77 Date: 2007/8/24 Time: 13:4:36*

**getver**

Response details	Description
Code Ver	Firmware version
Device IMEI	IMEI
Device ID	Device ID is used to detect by server which type of configuration to load
Modem App Ver	Version of modem application
Modem REV Ver	Modem Firmware version

*Example: Code Ver:0.48.17 Device IMEI:353976010139156 Device ID:000001  
Modem APP Ver:2007.11.07  
Modem REV Ver:04.13.00*

30

**getinfo**

Response details	Description
INI	Device Initialization Time
RTC	RTC Time
RST	Restart Counter
ERR	Error Counter
SR	Number of Sent Records
BR	Number of broken records
CF	Profile CRC Fail counter
FG	Failed GPRS counter
FL	Failed link counter
UT	UPD Timeout counter
SMS	Sent SMS Counter
NOGPS	No GPS Timer
GPS	GPS receiver state. 0 – OFF, 1 – restarting, 2 – ON but no fix, 3 – ON and operational, 4 – sleep mode
SAT	Average satellites
RS	Reset Source Identification

*Example: INI:2007/8/24 10:15 RTC:2007/8/24 12:43 RST:2 ERR:11 SR:182  
BR:0 CF:0 FG:0 FL:0 UT:0 SMS:2 NOGPS:0:0 GPS:3 SAT:7 RS:7*

**getio**

Response details	Description
DI#	Digital Input state
DO#	Digital Output state

*Example: DI1:0 DI2:0 DO1:0 DO2:0*

**readio #**

Response details	Description
ID	IO element ID
Value	IO Element value

*Example: IO ID:3 Value:0*

**setdigout ##**

Sets digital outputs to ON or OFF state. Value is written as a row for OUT1 and OUT2 values.

*Example: 'setdigout 01' will set OUT2 to high level, while OUT1to low level.*

**getparam ### #**

Read parameter value. ID consists of 4 digits – first digit identifies profile, second, third and fourth identifies parameter ID as described in Parameter List chapter.

Response details	Description
ID	Profile number and parameter ID
Value	Parameter value

**Response details Description**

ID Profile number and parameter ID

Value Parameter value

*Example: 'getparam 1245' command will request server IP address in profile1.*

31

setparam #### #

Sets new value for parameter. ID consists of 4 digits – first digit identifies profile, second, third and fourth identifies parameter ID as described in Parameter List chapter. In value field a new parameter value is entered.

*Example: 'setparam 1245 127.0.0.1' will change configured IP address in profile1 with new value*

flush #,#,#,#,#,#,#

Initiates all data sending by GPRS to specified target server. Comma separated parameters go as numbered:

- 1.# - IMEI
- 2.# - APN
- 3.# - GPRS LOGIN
- 4.# - GPRS PASSWORD
- 5.# - IP
- 6.# - PORT
- 7.# - MODE (0-TCP/1-UDP)

Parameters are separated by comma (no spaces needed). In case you don't need to enter parameter

(Login/Pass) – do not put space, simply put comma and write next parameter.

*Example: opa opa flush 353976012555151,banga,,,212.47.99.62,12050,0*

Response details	Description
FLUSH SMS Accepted	FLUSH SMS Accepted
# records found on FLASH	Number of records found on FLASH
Minimum Records to Send: #	Number of minimum saved records to send
GPRS Enabled: #	State of the GPRS connection, 0 – disabled; 1 – enabled
Time Sync: #	Indicates time synchronization on the device, 0 – not synchronized; 1 – synchronized

*Example: FLUSH SMS Accepted. 11 records found on FLASH. Minimum Records to Send: 1. GPRS Enabled: 1. Time Sync: 1.*

32

## 8 Debug mode

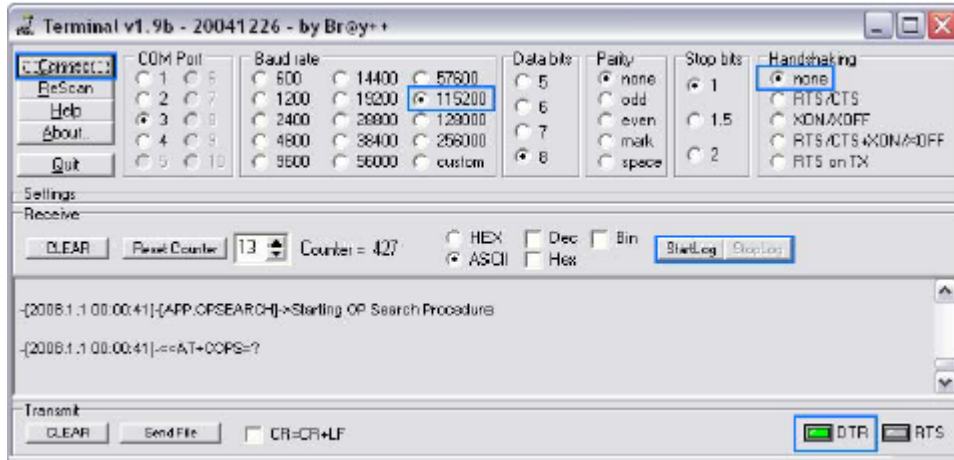
FM3200 is able to transmit its current state when connected to PC using USB cable. It is used to detect errors and provide information to possible solutions when operating as unexpected.

Download Terminal from:

<http://www.Diplomat.co.uk/Downloads/Software/Terminal.rar>.

After launching terminal choose baud rate 115200 and hardware control – none. Select COM port which is assigned to "FM22XX Port". Click on 'Start Log' button

and save a new file. Then click 'Connect' to start receiving messages from FM3200.



**Figure 26. Terminal window**

To debug NMEA GPS data, select COM port which is assigned to "FM32XX GPS", change baud rate value to 9600 and click "Connect".

33

## 9 Parameter List

FM3200 uses only one profile, therefore all changes to parameters must be done in profile1 (profile0 is for global parameters).

### 9.1 Global Parameters

Record search (ID=105)

Record search parameter is responsible for record searching order. Value of 0 arranging data starting from newest, while value of 1 arranging data starting from oldest.

Minimum value	Maximum value	Recommended value	Goes with (depends on) parameters	Value type
0	1	-	Data Send interval (ID=270)	S8

Link timeout (ID=107)

Link timeout in seconds, indicates link timeout after last record sending. Disconnection from server is not immediate after data packet is sent. Module disconnect from server after indicated timeout.

Minimum value	Maximum value	Recommended value	Goes with (depends on) parameters	Value type
5	259200	-	Data Send interval (ID=270)	U32

### 9.2 Data acquisition and sending parameters

Time based acquire interval (ID=11)

Time interval in seconds, indicating condition to acquire new record. 0 – disabled.

Minimum value	Maximum value	Recommended value	Goes with (depends on) parameters	Value type
0	9999999	5	<b>Distance based acquire interval (ID=12)</b> <b>Angle based coordinate acquisition (ID=13)</b>	U32

### Distance based acquire interval (ID=12)

Distance in meters, indicating condition to acquire new record. Record is stored when the distance between previous record is greater than parameter's value. 0 – disabled

Minimum value	Maximum value	Recommended value	Goes with (depends on) parameters	Value type
0	65535	50	<b>Time based acquire interval (ID=11)</b> <b>Angle based coordinate acquisition (ID=13)</b>	U16

### Angle based coordinate acquisition (ID=13)

Angle in degrees, indicating condition to acquire new record. If angle difference between last recorded coordinate and current position is greater than defined value, new record is stored. This parameter is operational, when speed is higher than 10km/h. 0 – disabled

Minimum value	Maximum value	Recommended value	Goes with (depends on) parameters	Value type
0	180	10	<b>Time based acquire interval (ID=11)</b> <b>Distance based acquire interval (ID=12)</b>	U32

34

### Data Send interval (ID=270)

Time interval in seconds, indicating frequency of sending data to server. 0 – disabled.

Minimum value	Maximum value	Recommended value	Goes with (depends on) parameters	Value type
0	9999999	5	<b>GPRS Enable (ID=240)</b> <b>GPRS Data send week time schedule (ID=272)</b> <b>Minimum records number in packet (ID=232)</b>	U16

### Minimum records number in packet (ID=232)

Minimum number of records in one data packet that can be sent to server. This parameter has higher priority than Data Send interval (ID=270).

Minimum value	Maximum value	Recommended value	Goes with (depends on) parameters	Value type
1	30	1	<b>Time based acquire interval (ID=11)</b> <b>Distance based acquire interval (ID=12)</b> <b>GPRS Data send week time schedule (ID=272)</b> <b>Data Send interval (ID=270)</b>	U8

### GPRS Enable (ID=240)

Parameter allows or does not allow using GPRS. If GPRS is not allowed value is 0, if GPRS is allowed – 1.

Minimum value	Maximum value	Recommended value	Goes with (depends on) parameters	Value type
0	1	1	Data Send interval (ID=270) Minimum records number in packet (ID=232) GPRS Data send week time schedule (ID=272)	S8

**GSM Operator list (ID=271)**

Parameter defines operator list. According to this list module allows GPRS connection only while operating under listed operators. GSM operator codes are comma separated. Example: 24601, 24602, 24705...24503

Minimum value	Maximum value	Recommended value	Goes with (depends on) parameters	Value type
Empty	-	-	-	U32

35

**GPRS Data send week time schedule (ID=272)**

This parameter manages when it is allowed to open GPRS context. When module starts it is prohibited to open the context. When modem's GPRS context is being closed (for example changing network) it is allowed to open it only at defined time. It is possible to allow connections every 10 minutes up to once per day.

Example value: 7FFF

Format is described in the next chapter.

**SMS Data send week time schedule (ID=273)**

Parameter defines SMS data sending according to week time schedule. This parameter is used to set data sending on selected week days and hours. Minimum time step is 10 minutes.

Example value: 7FFF

**Schedule parameter format**

Time is defined as 20 byte array. First byte of array defines week days, the following 18 bytes define timestamps with 10 minute interval and the last byte is unused. In first byte, first bit (LSB) defines if module should connect to GPRS (send SMS) on Monday, second bit – on Tuesday and so on up to seventh bit – which means Sunday. Eighth bit (MSB) is not used. If bits value is 0 then device is not allowed to open GPRS context, but if it is already open – does not close it. If value is 1 it will work as day minutes are defined in rest of the bytes.

Day's minutes are defined by 18 bytes (144 bits). Every n'th bit (beginning from the first bit (LSB) and ending 18 bytes 8'th bit (MSB)) indicates every 10'th minute of the day (day has 1440 minutes).

**Example:**

GPRS will be allowed on Monday to Friday at 8:00 and 16:00 GMT the following value should be configured:

00011111 00000000 00000000 00000000 00000000 00000000 00000000  
 00000000 1 00000000 00000000 00000000 00000000 00000000 00000000 1  
 00000000 00000000 00000000 00000000 00000000

Red bits indicate that GPRS will be allowed everyday except Saturdays and Sundays.

Blue bits indicate 480 and 720 minutes (480 min = 8 h and 720 min = 16 h). So the parameter value should be:

1F 00 00 00 00 00 00 01 00 00 00 00 00 01 00 00 00 00 00

It should be sent as UTF8 encoded string.

**SMS Data send allow (ID=250)**

Parameter allows or does not allow using binary SMS to send Avl data. If SMS use is not allowed value is 0, and 1 if allowed.

Minimum value	Maximum value	Recommended value	Goes with (depends on) parameters	Value type
0	1	0	Format is described in the next chapter. SMS Data send week time schedule (ID=273) SMS Data send allow (ID=250)	S8

**24 Records time step (ID=274)**

Module is able to send binary SMS which contains 24 coordinates. Parameter ID=274 defines time step (in milliseconds) between each coordinate.

36

Minimum value	Maximum value	Recommended value	Goes with (depends on) parameters	Value type
1	4294967295	3600000	SMS Data send allow (ID=250)Format is described in the next chapter. SMS Data send week time schedule (ID=273)	U32

**9.3 Security settings and parameters**

**SMS User login (ID=252)**

User login is used to ensure module security. Used in every SMS that is sent to device.

Example: ba321

Minimum value	Maximum value	Recommended value	Goes with (depends on) parameters	Value type
empty	5 char string	-	SMS User password (ID=253) Server Number (ID=260) Authorized Number #1 (ID=261)	S8[5]

**SMS User password (ID=253)**

User password is used to ensure module security. Used in every SMS that is sent to device.

Example: ab123

Minimum value	Maximum value	Recommended value	Goes with (depends on) parameters	Value type
Empty	5 char string	-	SMS User login (ID=252) Server Number (ID=260) Authorized Number #1 (ID=261)	S8[5]

Server Number (ID=260)

Value is server GSM number. To this number the SMS with 24 coordinates is sent.  
Example: 37060012345

Minimum value	Maximum value	Recommended value	Goes with (depends on) parameters	Value type
Empty	16 char string	-	SMS Data send allow (ID=250)	S8[16]

Authorized Number #1 (ID=261)

Parameters ID=262 to ID=269 have values for 8 more authorized numbers. If at least one number is entered then only those numbers can send messages to the device.

Example: 37060012346

Minimum value	Maximum value	Recommended value	Goes with (depends on) parameters	Value type
Empty	16 char string	-	SMS Data send allow (ID=250)	S8[16]

37

#### 9.4 GPRS access and address settings

APN Name (ID=242)

Parameter defines GPRS Access Point Name.

Minimum value	Maximum value	Recommended value	Goes with (depends on) parameters	Value type
Empty	32 char string	-	GPRS Enable (ID=240) APN username (ID=243) APN Password (ID=244)	S8[32]

APN username (ID=243)

Parameter defines APN username. In case operator does not use username for login, value should be empty.

Minimum value	Maximum value	Recommended value	Goes with (depends on) parameters	Value type
Empty	6 char string	-	APN Name (ID=242) APN Password (ID=244)	S8[6]

APN Password (ID=244)

Parameter defines APN password. . In case operator does not use password for login, value should be empty.

Minimum value	Maximum value	Recommended value	Goes with (depends on) parameters	Value type
Empty	6 char string	-	APN Name (ID=242) APN username (ID=243)	S8[6]

Data send protocol (ID=231)  
 Parameter defines GPRS data transport protocol. Module can use TCP or UDP transport protocol to send data to server. For TCP protocol value is 0, for UDP protocol value is 1.

Minimum value	Maximum value	Recommended value	Goes with (depends on) parameters	Value type
0	1	0	<b>GPRS Enable (ID=240)</b>	U8

Server IP address (ID=245)

Parameter defines Avl data destination server IP address. Example: 212.47.99.62

Minimum value	Maximum value	Recommended value	Goes with (depends on) parameters	Value type
Empty	16 char string	-	<b>GPRS Enable (ID=240)</b> <b>Server port number (ID=246)</b>	S8[16]

Server port number (ID=246)

Parameter defines Avl data destination server port number. Example: 12050

Minimum value	Maximum value	Recommended value	Goes with (depends on) parameters	Value type
Empty	65535	-	<b>GPRS Enable (ID=240)</b> <b>Server IP address (ID=245)</b>	U16

38

## 9.5 Geofence zones settings and parameters

This chapter explains how to get all parameters for the first GeoFence zone (all ID numbers are for the 1st zone). And at the end of the chapter (part 1.6.7) is presented a table with the IDs of all the rest GeoFence zones.

GeoFence border width (ID=20)

GeoFence border thickness, measured in meters.

Minimum value	Maximum value	Recommended value	Goes with (depends on) parameters	Value type
100	9999999	1000	<b>GeoFence Zone #1 Configuration Parameter (ID=30)</b>	U32

GeoFence Zone #1 Configuration Parameter (ID=30)

GeoFence Zone #1 Configuration is 1st zone basic settings parameter: GeoFence zone shape, priority, zone entering event, zone-leaving event. There are two GeoFence zone shapes: circle, rectangle. GeoFence Zone priority has eight levels (0 to 7). Parameter value is four bytes that have bit encoded values.

- 0 bit – GeoFence zone shape
- 1-3 bits – GeoFence event priority
- 4 bit – Zone entering event
- 5 bit – Zone leaving event
- 6-31 bits reserved

### Example:

Value to set: 51 (integer) is [M]00110011[L], where GeoFence Zone shape is Rectangular, priority of 1, Zone entering event is enabled, Zone leaving event is enabled.

Minimum value	Maximum value	Recommended value	Goes with (depends on) parameters	Value type
0	-	-	GeoFence border width (ID=20) GeoFence x1 (ID=31) GeoFence y1 (ID=32) GeoFence x2 (ID=33) GeoFence y2 (ID=34)	U32

### GeoFence x1 (ID=31)

Parameter has two meanings dependent on zone shape. If shape is rectangular, then ID=31 is left down corner X coordinate in WGS. If shape is circle, then ID=31 is center of that circle X coordinate in WGS.

Sample value: 25.30528

Minimum value	Maximum value	Recommended value	Goes with (depends on) parameters	Value type
-180.0	180.0	-	GeoFence border width (ID=20) GeoFence Zone #1 Configuration Parameter (ID=30)	Float

### GeoFence y1 (ID=32)

Parameter has two meanings dependent on zone shape. If shape is rectangular, then ID=32 is left down corner Y coordinate in WGS. If shape is circle, then ID=32 is center of that circle Y coordinate in WGS.

39

Minimum value	Maximum value	Recommended value	Goes with (depends on) parameters	Value type
-90.0	90.0	-	GeoFence border width (ID=20) GeoFence Zone #1 Configuration Parameter (ID=30)	Float

### GeoFence x2 (ID=33)

Parameter has two meanings dependent on zone shape. If shape is rectangular, then ID=33 is right upper corner X coordinate in WGS. If shape is circle, then ID=33 is radius of circle with center of ID=31 and ID=32.

Minimum value	Maximum value	Recommended value	Goes with (depends on) parameters	Value type
-180.0	180.0	-	GeoFence border width (ID=20) GeoFence Zone #1 Configuration Parameter (ID=30)	Float

### GeoFence y2 (ID=34)

If shape is rectangular, then ID=34 is right upper corner Y coordinate in WGS. If shape circle, ID=34 is not used.

Minimum value	Maximum value	Recommended value	Goes with (depends on) parameters	Value type
-90.0	90.0	-	GeoFence border width (ID=20) GeoFence Zone #1 Configuration Parameter (ID=30)	Float

All the rest zones

Other 5 GeoFence zones parameters have the same logic as shown in GeoFence Zone #1.

GeoFence Zone Number	GeoFence Zone's parameters
2	40 – 44
3	50 – 54
4	60 – 64
5	70 – 74

## 9.6 System parameters

Sleep mode (ID=000)

Parameter enables or disables sleep mode for FM4100: 0 – disabled, 1 – enabled.

Minimum value	Maximum value	Recommended value	Goes with (depends on) parameters	Value type
0	1	-	-	Enum

GPS Enable (ID=10)

Parameter enables or disables GPS receiver. When GPS is disabled value is 0, and 1 when enabled.

Minimum value	Maximum value	Recommended value	Goes with (depends on) parameters	Value type
0	1	-	Time based acquire interval (ID=11) Distance based acquire interval (ID=12) Angle based coordinate acquisition (ID=13)	S8

40

## 9.7 IO properties

IO properties – are additional data sources which are recorded along with usual GPS data.

IO#1 property parameter (ID=300)

Parameter defines IO property value. Possible values: enabled (value 1), disabled (value 0).

0	1
Disabled	Enabled

If value is 'CAN', then CAN data is automatically added to this property.

Minimum value	Maximum value	Recommended value	Goes with (depends on) parameters	Value type
0	byte	-	IO#1 priority (ID=301) IO#1 High level (ID=302) IO#1 Low level (ID=303) IO#1 logic operand (ID=304) IO#1 averaging length (ID=305)	S8

IO#1 priority (ID=301)

Parameter defines IO property type of priority: 0 is low, 1 – high, 2 – panic, 3 – security priority type.

Minimum value	Maximum value	Recommended value	Goes with (depends on) parameters	Value type
0	3	0	IO#1 property parameter (ID=300) IO#1 High level (ID=302) IO#1 Low level (ID=303) IO#1 logic operand (ID=304) IO#1 averaging length (ID=305)	S8

### IO#1 High level (ID=302)

Parameter defines high value of triggered IO property. This parameter is used to set thresholds for IO properties to generate events.

Minimum value	Maximum value	Recommended value	Goes with (depends on) parameters	Value type
-2147483648	2147483648	1	IO#1 property parameter (ID=300) IO#1 priority (ID=301) IO#1 Low level (ID=303) IO#1 logic operand (ID=304) IO#1 averaging length (ID=305)	S32

### IO#1 Low level (ID=303)

Parameter defines low value of triggered IO property. This parameter is used to set thresholds for IO properties to generate events.

41

Minimum value	Maximum value	Recommended value	Goes with (depends on) parameters	Value type
-2147483648	2147483648	0	IO#1 property parameter (ID=300) IO#1 priority (ID=301) IO#1 High level (ID=302) IO#1 logic operand (ID=304) IO#1 averaging length (ID=305)	S32

### IO#1 logic operand (ID=304)

Parameter defines when event is sent: 0: on range exit, 1: on range entrance, 2: both, 3: monitoring.

Minimal value	Maximum value	Recommended value	Goes with (depends on) parameters	Value type
0	3	3	IO#1 property parameter (ID=300) IO#1 priority (ID=301) IO#1 High level (ID=302) IO#1 Low level (ID=303) IO#1 averaging length (ID=305)	S8

### IO#1 averaging length (ID=305)

Parameter defines IO property sample length to average. If no averaging needed default value is 1.

Minimum value	Maximum value	Recommended value	Goes with (depends on) parameters	Value type
0	2147483648	1	IO#1 property parameter (ID=300) IO#1 priority (ID=301) IO#1 High level (ID=302) IO#1 Low level (ID=303) IO#1 logic operand (ID=304)	S32

Other IO property elements are configuring in same logic. All IO elements parameter list is below.

IO Element Number	IO element parameters
IO#0 – Digital input 1	300 – 305
IO#1 – Digital input 2	310 – 315
IO#2 – Digital output 1	320 – 325
IO#3 – Digital output 2	330 – 335
IO#4 – PDOP	340 – 345
IO#5 – HDOP	350 – 355
IO#6 – External Power voltage	360 – 365
IO#7 – GPS power	370 – 375
IO#8 – PCB temperature	380 – 385
IO#9 – Movement sensor	390 – 395
IO#10 – Odometer	400 – 405
IO#11 – Current Operator Code	410 – 415
IO#12 – Speedometer	420 – 425
IO#13 – Battery voltage	430 – 435
IO#14 – Battery current	440 – 445

42

## 10 MOUNTING RECOMMENDATIONS

### 10.1 Connecting Wires

- Wires should be connected while module is not plugged in.
- Wires should be fastened to the other wires or non-moving parts. Try to avoid heat emitting and moving objects near the wires.
- The connections should not be seen very clearly. If factory isolation was removed while connecting wires, it should be applied again.
- If the wires are placed in the exterior or in places where they can be damaged or exposed to heat, humidity, dirt, etc., additional isolation should be applied.
- Wires cannot be connected to the board computers or control units.

### 10.2 Connecting Power Source

- Be sure that after the car computer falls asleep, power is still available on chosen wire. Depending on a car, this may happen in 5 to 30 minutes period.
- When module is connected, be sure to measure voltage again if it did not decrease.
- It is recommended to connect to the main power cable in the fuse box.

### 10.3 Connecting Ignition Wire

- Be sure to check if it is a real ignition wire – power does not disappear while starting the engine.
- Check if this is not an ACC wire (when key is in the first position, most electronics of the vehicle are available).
- Check if power is still available when you turn off any of vehicles devices.
- Ignition is connected to the ignition relay output. As alternative, any other relay, which has power output, when ignition is on, may be chosen.

### 10.4 Connecting Ground Wire

- Ground wire is connected to the vehicle frame or metal parts that are fixed to the frame.
- If the wire is fixed with the bolt, the loop must be connected to the end of the wire.
- For better contact scrub paint from the place where loop is connected.

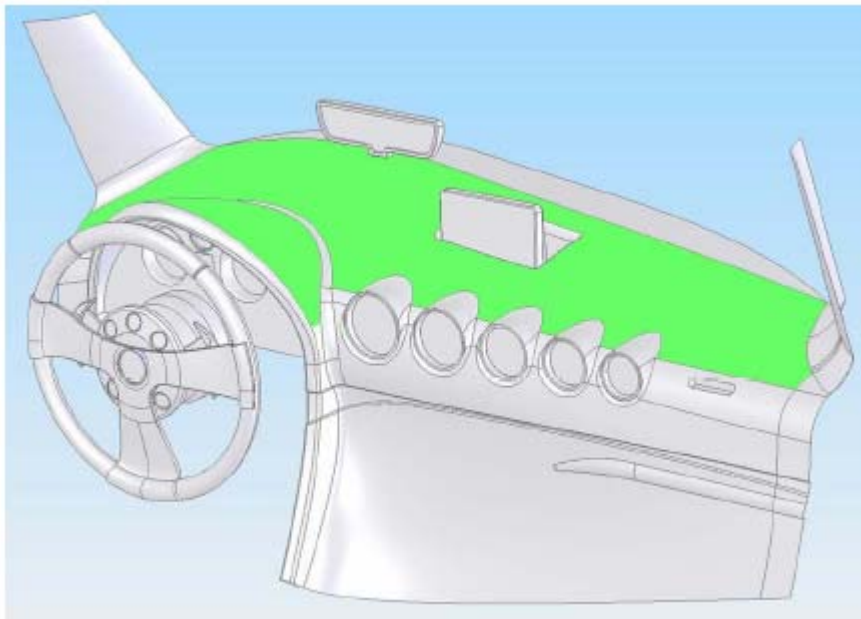
**10.5 Connecting Antennas**

- When placing antennas avoid easily reached places.
- Avoid GPS antenna placement under metal surfaces.
- Avoid placing FM3200 device near car radio, speakers or alarm systems.
- GPS antenna must be placed so its state is as horizontal as possible (if antenna is leant more than 30 degrees, it is considered incorrect mounting).
- GPS antenna cable cannot be bent more than 80 degrees.
- GPS antenna must be placed sticker facing down



**Figure 27 GPS antenna correct mounting.**

It is recommended to place GPS antenna behind dashboard as close to the window as possible. A good example of GPS antenna placement is displayed in a



picture below (area colored green).

**Figure 28. Correct placement of FM3200**

**10.6 Module Installation**

- Module should not be seen or easily reached.
- Module should be firmly fixed to the surface or cables.
- Module cannot be fixed to heat emitting or moving parts.
- SIM card should be inserted in the module while the connector is plugged off (while module has no power).

## 11 CHANGE LOG

Nr.	Date	Version	Comments
1	091103	0.1	Preliminary draft release.
2	091105	0.2	Added paragraph 6.9.3 Hysteresis, describing event generation according hysteresis algorithm.
3	091116	0.3	FM3200 view & dimensions figure added.