

# Leda Compact Quick Start

## Instructions For Use

---



Copyright © 2011 Diplomat Ltd. All rights reserved. Reproduction, transfer, distribution or storage of part or all of the contents in this document in any form without the prior written permission of Diplomat Ltd is prohibited.

Other products and company names mentioned in this document may be trademarks or trade names of their respective owners.

### Inserting a SIM card into the Leda Compact

Ensure that the SIM card you are about to install in the Leda Compact is validated and has credit on it!

We **STRONGLY** recommend that you always insert a new SIM card into a normal mobile phone before inserting it into your Leda Compact for the first time. This will ensure that any "Welcome" messages and "Opt-In" deals by your network provider can be dealt with by you before the SIM card is inserted into a device that won't know what any of these messages are about!

#### 1. Remove the Battery Cover of the Leda Compact

Slide the battery cover in the direction shown by the arrow and lift the cover away. If you see that the blue battery of your Leda Compact is fitted when you remove the cover then lift it out and unplug its lead before going any further.



#### 2. Open the Cover of the SIM Card Holder

Slide the SIM card holder metal cover in the direction shown by the arrow. You may need to use your fingernail in the slot in the cover to get it to move. It will 'click' to one side to allow you to hinge it upwards.



### 3. Orientate the SIM Card ready to place it into the holder

With SIM card holder hinged open you will see the recess that you will place the SIM card into.



Hold SIM card with gold contact side down and chamfer in this corner

### 4. Place the SIM Card into the Holder and Close the Cover

As you close the metal cover of the SIM card holder ensure that the SIM card stays in the recess of the holder (it can easily pop out as you hinge down the cover!)



Keep an eye on the SIM card to make sure it stays in its recess

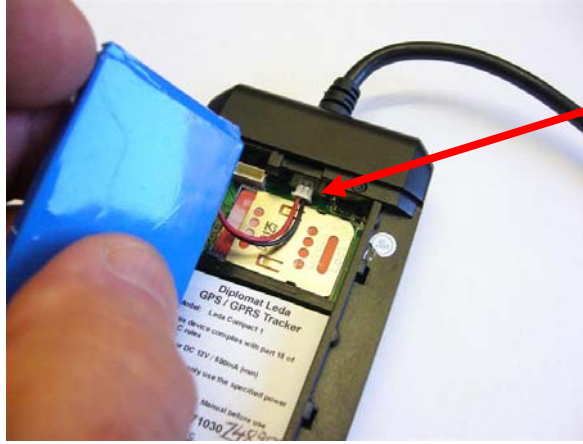
### 5. Slide the Metal Cover to lock it in place

When the metal cover of the SIM card holder is closed, slide it in the direction of the arrow to lock it in place.



### 6. Plug in the Battery

With SIM card now in its holder, you can now plug in the backup battery. It plugs into the small white 2-pin connector you see here. It will only fit one way round – do not force it or permanent damage will be caused.



Push the small white socket on the end of the battery cable into the connector here.

### 7. Place the Battery in the tracker and Close the Cover

Position the battery in the recess in the Leda Compact. Ensure that you do not strain the battery cable or trap the cable under the battery (there is enough space above the SIM card holder for the cable not to get squashed). Once the battery is in place, refit the battery cover as shown – it will 'click' securely into place.



The battery is correctly fitted into the recess in the tracker.



Refit the battery cover by sliding it in the direction shown until it 'clicks' into place.

### LED Indicators

Blue LED - indicates the GSM status

State	Meaning
Steady Light	No SIM card or no GSM network
Flashing once every 8 secs	GSM modem operational and in standby
Flashing fast	Voice call or GSM session in progress

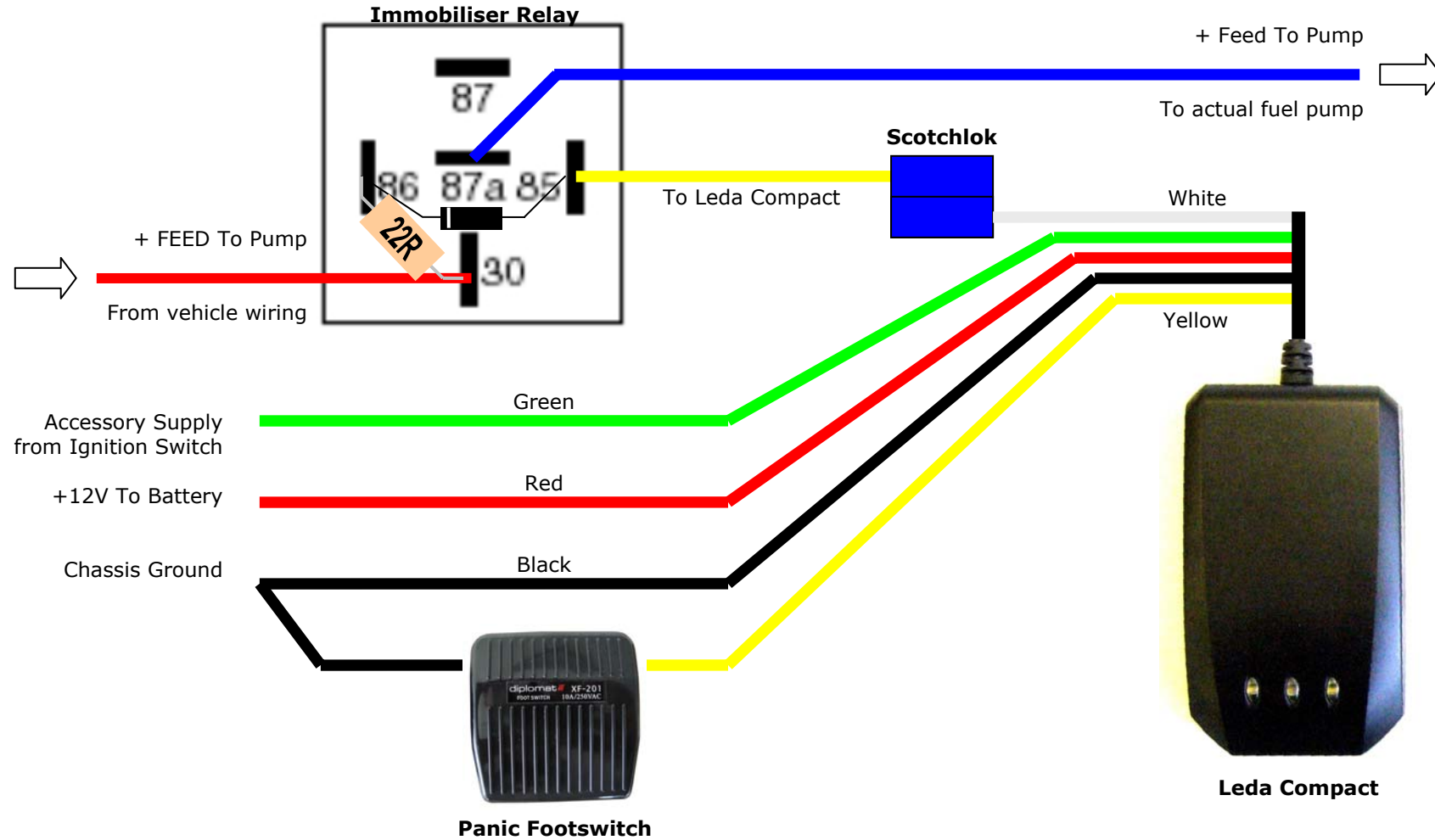
Red LED - indicates battery charge state

State	Meaning
Steady Light	Battery charging
Off	Charging complete

Green LED - indicates the GPS status

State	Meaning
Flashing	Operational with a valid fix
Off	No GPS fix

# VEHICLE INSTALLATION



## Configuring the Leda Compact For Online Vehicle Tracking Via Planet Pin

Ensure that the SIM card you have installed in the Leda Compact is validated and has credit on it! We recommend that you always try out a SIM card in a normal mobile phone before inserting it into your Leda Compact for the first time.

The first thing to do is to designate a mobile number that the Leda Compact will recognise commands from. You can designate up to three mobile numbers.

1) Send an SMS to the phone number of the SIM card in the Leda Compact as follows:

**\*yourphonenumber\*0000\*1\*\***

Where "yourphonenumber" is the mobile phone number you want to designate as the "Master" or controller phone. The maximum length is 20 digits. Format is the +international country code followed by your number without the leading zero: e.g. UK mobile "07827123456" would be entered as "+447827123456"

The "0000" is the default password for changing any parameters in your Leda Compact. You may wish to change these four digits to something else later on. (see the full Configuration Guide document for details on how to do this)

The "1" is the sequence number of the three possible designated phone numbers (i.e. this is the first phone number, the next one would have a number 2 here and the third one will have a number 3). Alerts will be sent to phone number 1 and, if it is unreachable, to phone number 2 and then to phone number 3.

When you send any valid SMS command to the Leda Compact it will reply shortly after with an SMS to confirm that it has processed your command.

2) Enable GPRS connection mode by sending: **7100000**

3) Setup the GPRS APN for the mobile phone network you are using by sending: **#803#0000#APNName#Username#password##**

Note, if APN for your network does not require a user name and password you can use a shorter version of this command: **#803#0000#APN Name##**

4) Configure the Leda Compact with the IP address and port number of the Planet Pin server by sending: **#804#0000#109.200.19.99#6800##**

5) Configure upload interval when ACC=ON by sending: #805#0000#60#1##  
This would cause it to upload GPS data every 60 seconds.

6) Configure upload interval when ACC=OF by sending: #809#0000#300#1##  
This would cause it to upload GPS data every 300 seconds (e.g. every 5 minutes)

7) Register your Leda Compact online for a free 30 day trial of the Planet Pin Online Tracking Portal! Click on the Register Today link on our web page:  
<http://www.planetpin.com/onlinetracking>

8) Open a web browser and enter the address:  
<http://tracking.planetpin.com/trackingserver>

Login using the following credentials:

Username: demo  
Password: demo

Contact your local Diplomat or Planet Pin representative for your own private subscription credentials for this service.

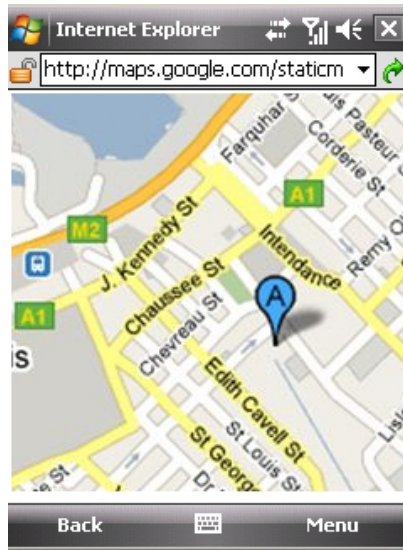
### On-Demand SMS Request Location By Google Map URL

Send an SMS to the phone number of the SIM card in the Leda Compact containing only the following numbers in the text message:

**6680000**

The "0000" you see here is the default password already set in your Leda Compact. You may wish to change these four digits to something else later on. (see the full Configuration Guide document for details on how to do this)

Reply: An SMS containing a Google map URL link. Clicking on the link contained in the message will launch a web browser (web browser enabled mobile phone required!) and will display current location in Google Maps.



### Vehicle Immobiliser Feature

The WHITE wire in the cable of the Leda Compact may be connected to the optional Immobiliser Kit. Part of the kit includes an automotive grade relay for interrupting a supply within the vehicle in order to immobilise it.

Typical applications for the Immobiliser Relay is to interrupt the power to the fuel pump or to interrupt the signal from the oil pressure sender on the engine. Other applications may exist on other vehicles.

The purpose of the Immobilise commands is to energise or de-energise the relay therefore the Immobiliser Kit must be installed in order for any of the Immobiliser commands to work!

#### • Immobilize Vehicle

There is a **TWO STEP** process required to immobilise a vehicle:

Format: 900userpassword

Example: 9000000

Reply: CONFIRM POWER OFF?

Explanation: When the Leda Compact receives the 900 command with the correct user password it prompts for confirmation by sending an SMS to the controller phone containing the message "CONFIRM POWER OFF". No further action will be taken unless the following SMS is sent to the Leda Compact:

Format: 901user password

Example: 9010000

Reply: POWER OFF

Explanation: When the Leda Compact receives the 901 command with the correct user password as confirmation of an immobilisation request it energises the relay in the Immobiliser Kit. The vehicle will become Immobilised.

## • Remobilise Vehicle

There is a **TWO STEP** process required to remobilise a vehicle:

Format: 902userpassword

Example: 9020000

Reply: CONFIRM POWER ON?

Explanation: When the Leda Compact receives the 902 command with the correct user password it prompts for confirmation by sending an SMS to the controller phone containing the message "CONFIRM POWER ON". The vehicle will continue to be immobilised unless the following SMS is sent to the Leda Compact:

Format: 903user password

Example: 9030000

Reply: POWER ON

Explanation: When the Leda Compact receives the 903 command with the correct user password as confirmation of an remobilisation request it de-energises the relay in the Immobiliser Kit. The vehicle will become mobile again.

## Comprehensive Set Of Features

The Leda Compact has a comprehensive set of enhanced features including:

- Geo-Fence Alerts
- Panic Alerts
- Automatic location reporting
- Vehicle Ignition On/Off reporting

See the Leda Compact Full Configuration Guide for a complete list of SMS commands to configure your Leda Compact tracker for enhanced features.

**Thank You for choosing the Leda Compact!**