

Wide Area Plot Set-up



NAVIGATOR PRO

Table of contents

What is Wide Area Plot Set-up? 3
The Wide Area Plot Set-up process..... 3
Getting into the Plot Set-up window 3
 Creating the new plots 5
 Check that the new plots are in Navigator 6
 Add a place to the new plot..... 7
 Check to make sure the new place is in the new plot and calculate the
 plot centre..... 9
 Use Plot Set-up to sweep the village streets into the new plot..... 10
 Checking the street assignment and tidying up 14

What is Wide Area Plot Set-up?

Wide Area Plot Set-up is a particular way of setting up plots in rural areas where plots are widely spaced apart and villages are set-up as individual plots.

This document will take you through the process of creating the individual plots and moving streets, lanes and roads into it.

The Wide Area Plot Set-up process

The process we're going to go through is as follows:

1. Create the plots in Plot Set-up
2. Add a place from the National database to the newly created plot
3. Calculate the plot centre
4. Assign the place to the new plot
5. Sweep any other streets or places into the new plot
6. Check the new plot and streets and tidy-up if necessary

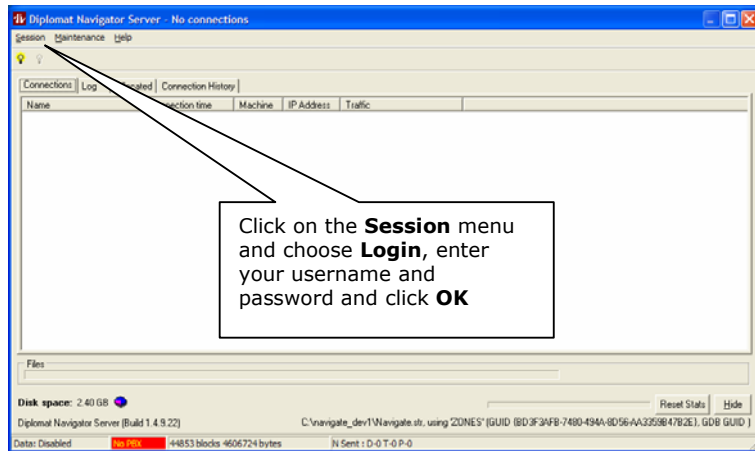
Getting into the Plot Set-up window

Plot Set-up is located on the Server. All Navigator clients must be logged out before you can get into Plot Set-up i.e. make sure everyone is logged out of Navigator. Once all the clients are logged out, follow these instructions to log into the Server:

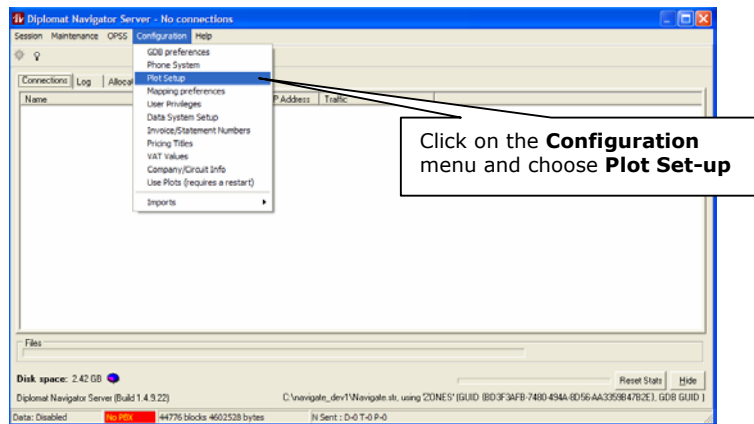
1. On the server, right-mouse click on the NavSrv icon in the System Tray (you'll find this in the bottom right-hand corner of the screen) and choose **Connection Info**



2. The Navigator Server window will open...

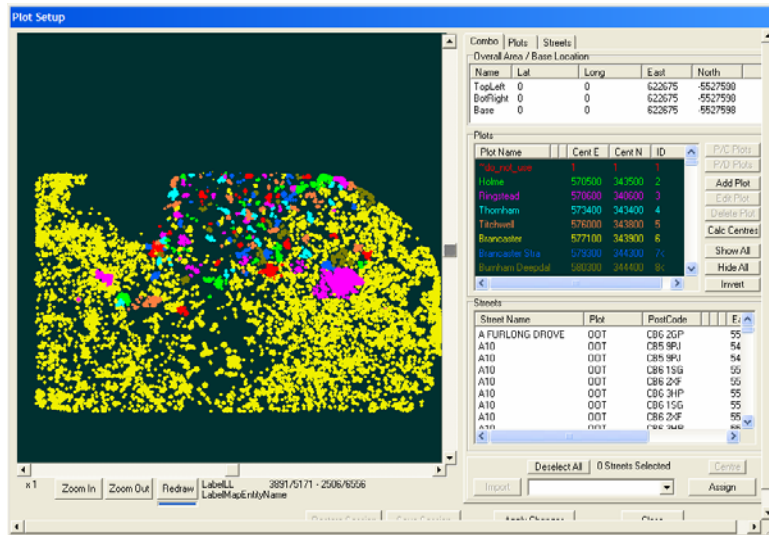


3. Click on the **Session** menu and choose **Login**
4. Enter your username and password and press **ENTER** or click **OK**
5. You'll now be logged on to the Server and you should see more menus across the top. Click on the **Configuration** menu and choose **Plot Set-up**



6. Once Navigator has finished scanning places in the street database, the Plot Set-up window will appear showing your local area.

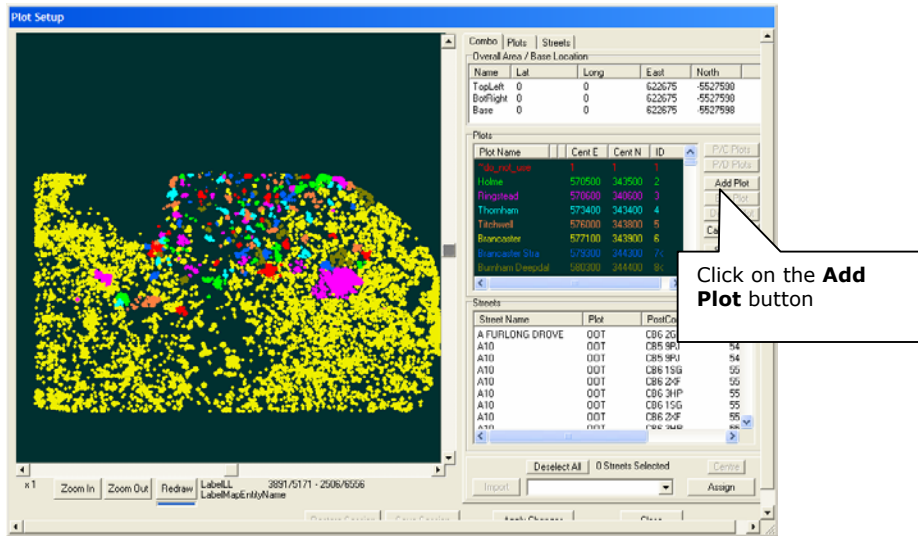
To familiarise yourself with the Plot Set-up window, please refer to [Plot Set-up](#) in the Owner/Manager Guide.



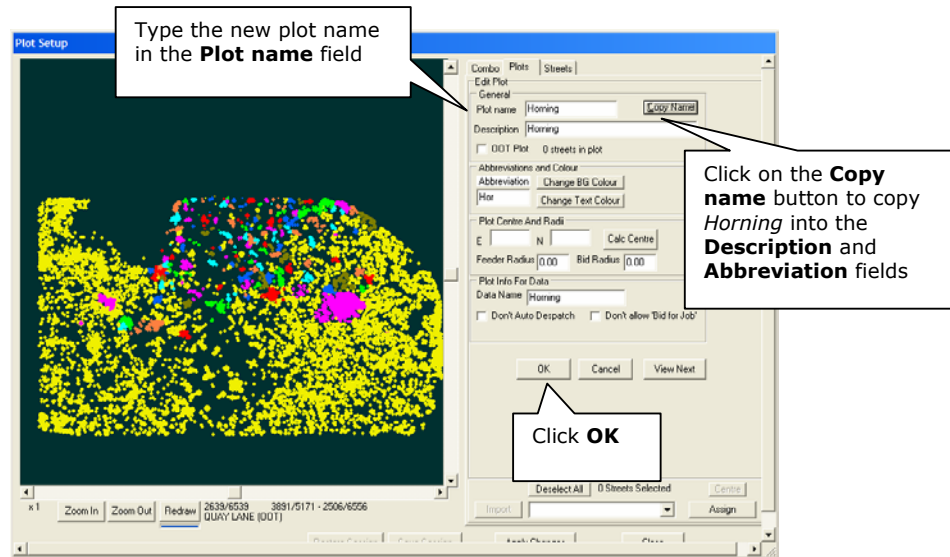
Creating the new plots

Now you're in the Plot Set-up window you can start creating the new plots. In this example we'll be creating a plot called *Horning*. Horning is a village in East Anglia that will become a plot, we'll then move all the streets in Horning into the newly created *Horning* plot.

1. Click on the **Add Plot** button



2. In the **Plot Name** field type the name of the new plot e.g. *Horning*.
3. Click on the **Copy name** button to copy the plot name into the **Description** and **Abbreviation** fields – this just saves you extra typing!
4. Click **OK**

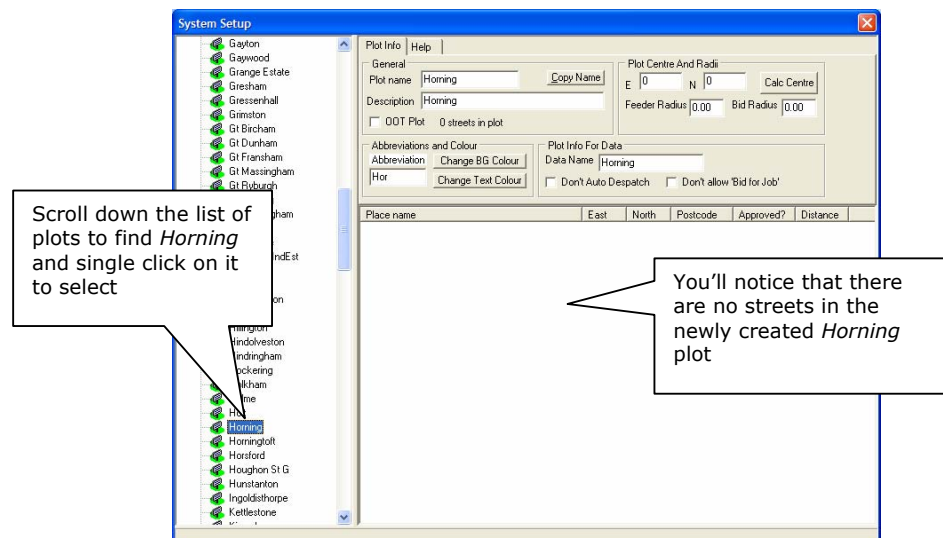


5. Continue doing this for all new plots
6. **IMPORTANT:** Click on the **Apply Changes** button when finished. If you don't do this none of your new plots will have been created!

Check that the new plots are in Navigator

Before we go any further let's just pop into **Edit Plots** to make sure that the new plots are all present and correct:

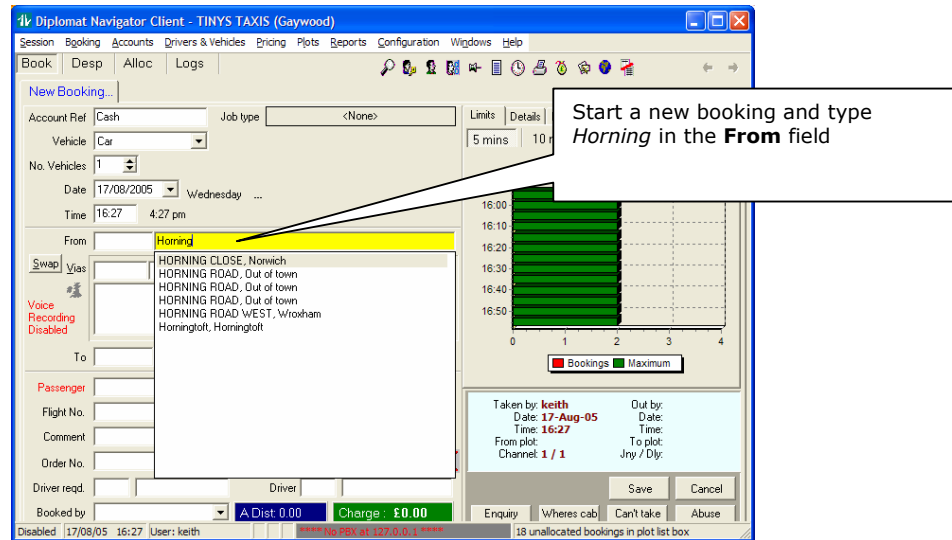
1. Start up Navigator and log in
2. Click on the **Plots** menu and choose **Edit Plots**
3. Scroll down the list of plots in the left-hand window to find *Horning*
4. Single click on the *Horning* plot and you'll notice that the right-hand window pane is empty – we have yet to add any streets to the new plot



Add a place to the new plot

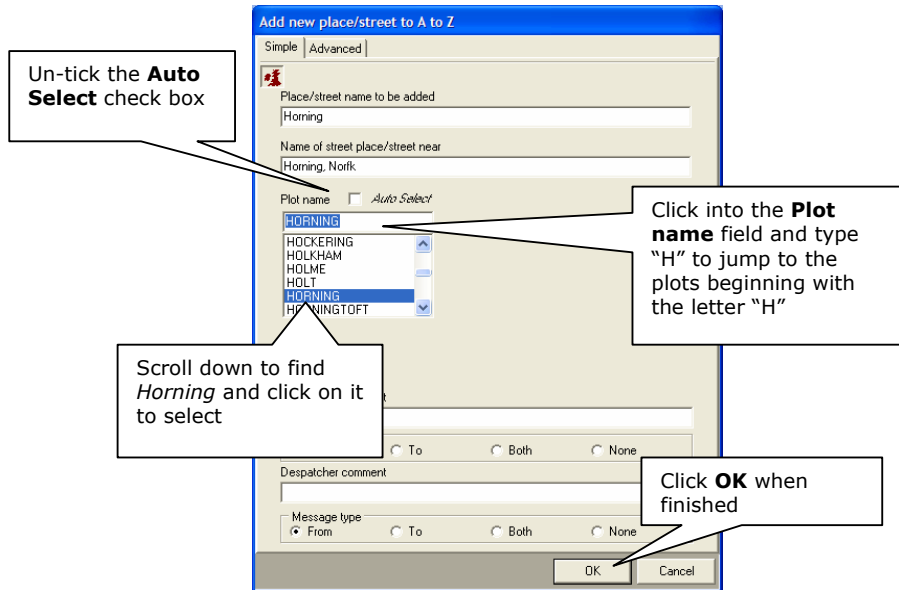
Next we need to go back into Navigator and add a place to our new plot before we can sweep all the other streets in that village into the new plot. This will give Navigator the Eastings and Northings of Horning (which it will get from the National database) so it knows where to place the new plot.

1. Click on the Booking Screen to create a new booking
2. Type *Horning* in the **From** field



3. Press **F2** to bring up the **Add new place/street** dialogue box
4. Horning will already be in the first field
5. Most villages will already be in the National database, so toggle the National database on by either pressing the **F8** key on your keyboard or by clicking on the **National** button

10. Click **OK** when finished

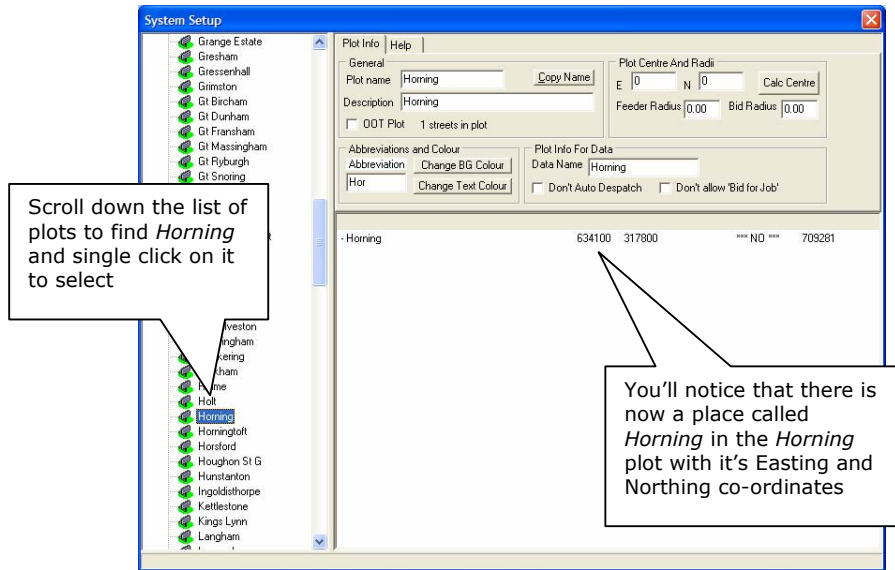


Check to make sure the new place is in the new plot and calculate the plot centre

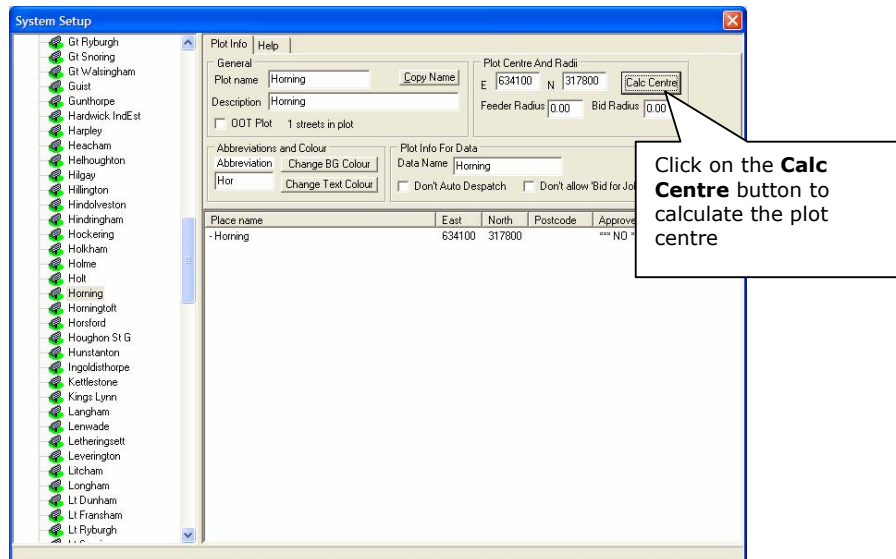
Before we sweep all the streets of Horning into the new plot, let's just make sure the new place is in the new *Horning* plot. Whilst we're in **Edit Plots** we'll also calculate the plot centre (please refer to [Plot Centres](#) in the Owner/Manager Guide for more information).

1. Click on the **Plots** menu and choose **Edit Plots**
2. Scroll down the list of plots in the left-hand window to find *Horning*
3. Single click on the *Horning* plot and you'll notice that there is now a place called *Horning* in the *Horning* plot with it's Easting and Northing co-ordinates.

You can check that these co-ordinates are correct by visiting www.streetmap.co.uk. Please refer to Obtaining Eastings and Northings in the Owner/Manager Guide for more information.



4. To calculate the plot centre, just click on the **Calc Centre** button

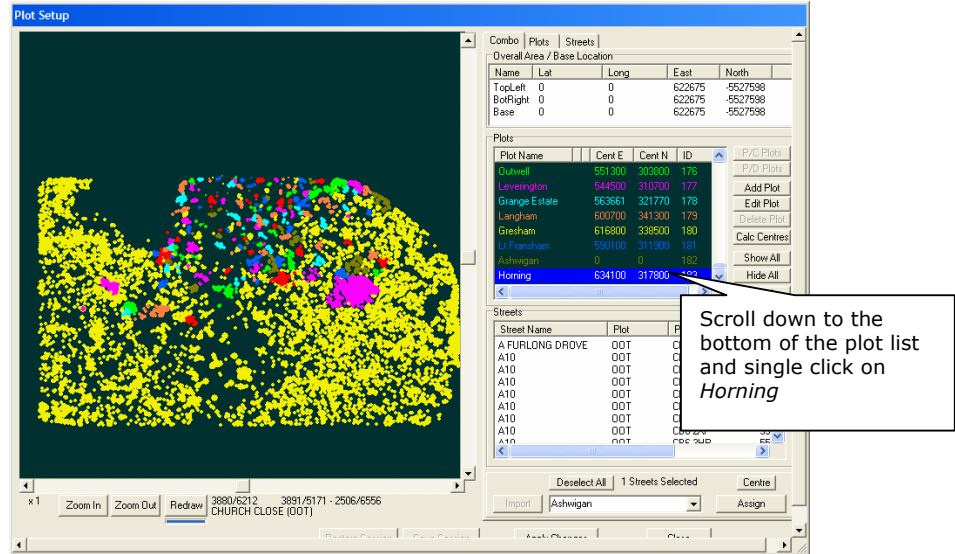


5. Click on the cross in the top right-hand corner to finish

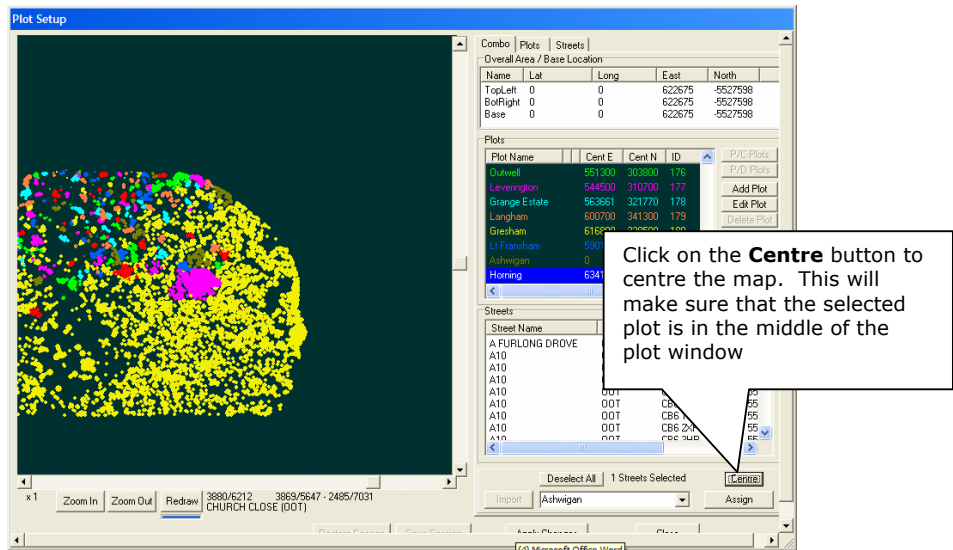
Use Plot Set-up to sweep the village streets into the new plot

Next we're going to use the Plots Set-up interface to "sweep" all the streets in Horning into the Horning plot.

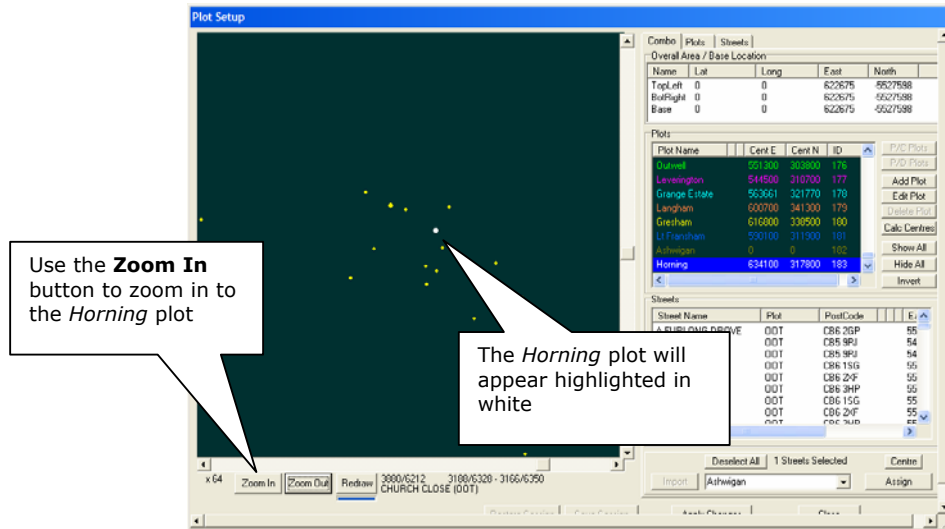
1. Close Navigator and log back into the Server
2. Click on the **Configuration** menu and choose **Plot Set-up**
3. Scroll down to bottom of the list of plots and find the new plot (newly created plots will be found at the bottom of the list). Single click on *Horning* to select.



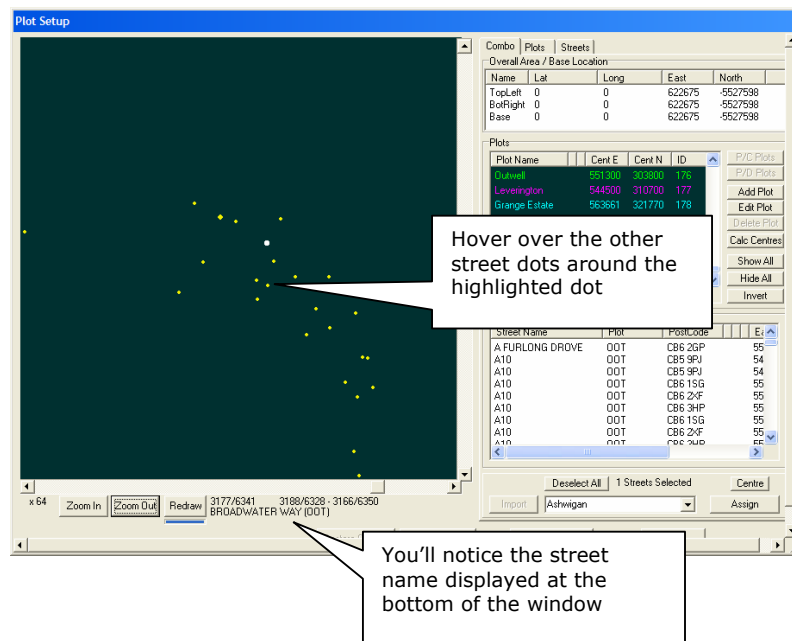
- The selected plot will be highlighted in white, however, you might not be able to see it yet. Click on the **Centre** button to make sure the selected plot is bang in the middle of the plot window



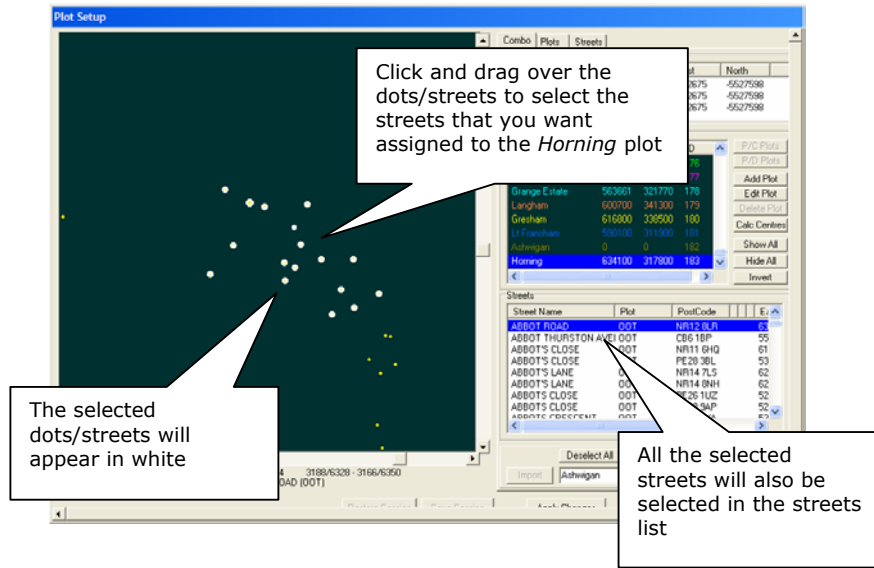
- Next use the **Zoom In** button to zoom in to the *Horning* plot on the map. As you zoom in further you'll see the new plot highlighted with a white ring around it



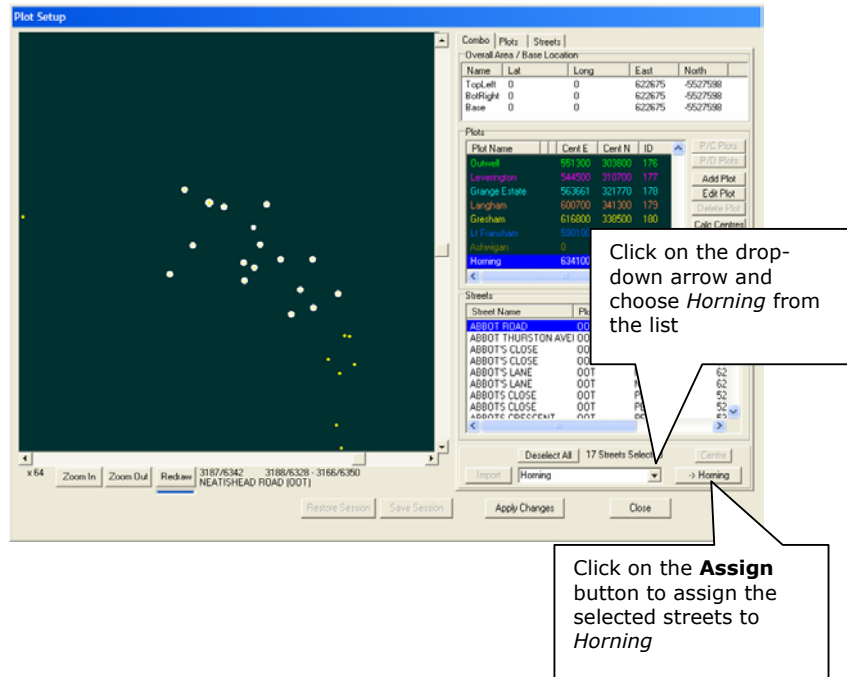
- Next you need to decide which other streets you want included in this plot. Hover the mouse over the other dots around the highlighted dot and you'll notice the street name showing the bottom of the window



- Click on the dots (streets) that you want to assign to the *Horning* plot. The selected dots/streets will become highlighted in white. You can also click and drag over the dots to select many at a time.

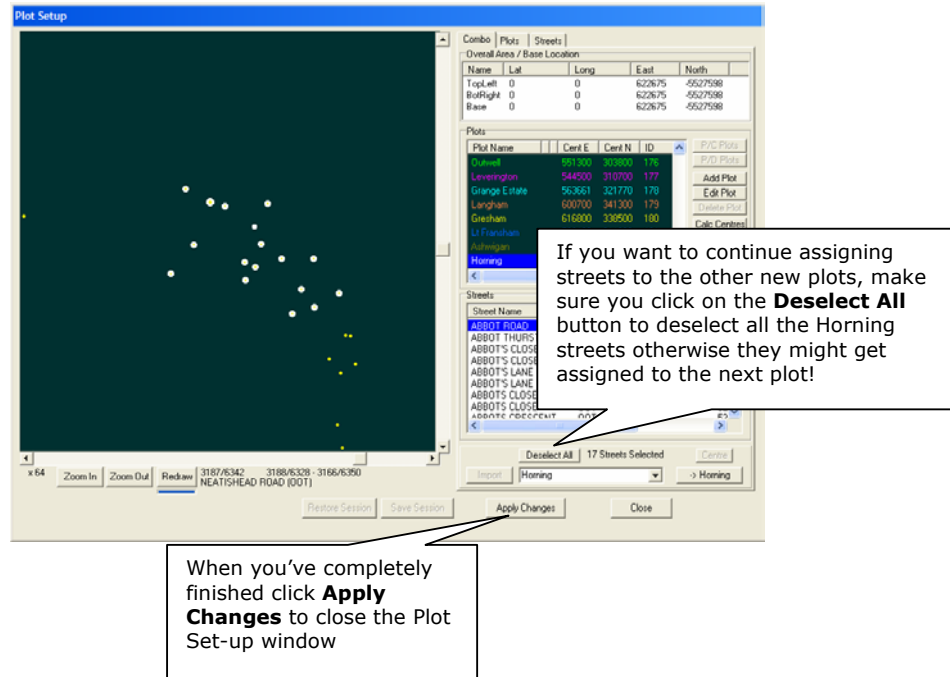


8. Next we'll assign the selected streets to the *Horning* plot.
Click on the plot name drop-down arrow at the bottom right-hand corner of the Plot Set-up window and choose *Horning* from the plot list
9. Click on the button to the right of the list (which should have updated to say "-> Horning") to assign the selected streets to *Horning*



10. If you have finished in the Plot Set-up window, just click the **Apply Changes** window to apply the changes you've made and close the Plot Set-up window.

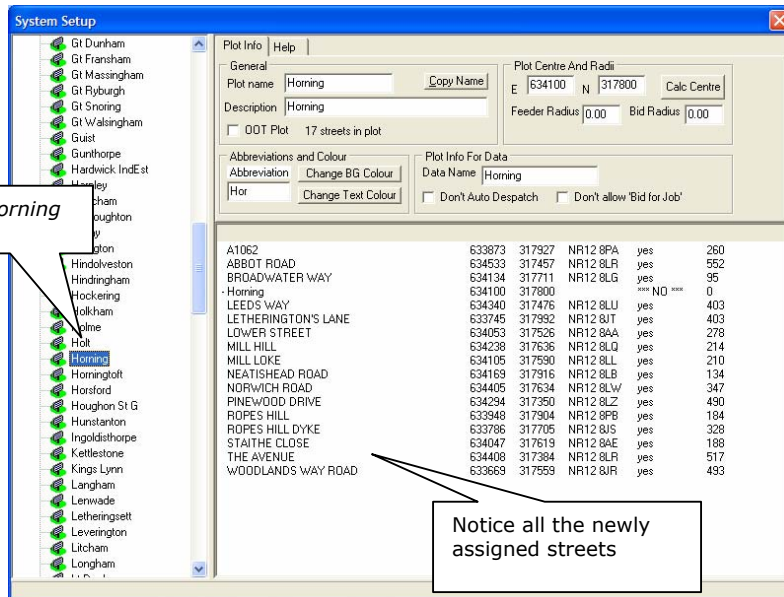
If however you want to move onto the next plot you **MUST DESELECT** all the selected streets by clicking on the **Deselect All** button before you move on to the next plot. If you don't, the Horning streets will stay selected and get moved to the next plot!



Checking the street assignment and tidying up

Let's just pop back into Navigator and check the street assignment. We can also use the opportunity to tidy up any loose ends – a street might have been added to the Horning plot that actually belongs to a neighbouring plot, or you might have missed a street that you now want to add.

1. Start up Navigator and log in
2. Click on the **Plots** menu and choose **Edit Plots**
3. Scroll down the list of plots in the left-hand window to find *Horning*
4. Single click on the *Horning* plot and you'll notice all the streets that have been assigned to *Horning*



5. Let's say for this example that *Norwich Road* actually belongs in the *Wroxham* plot. We can drag and drop *Norwich Road* into *Wroxham* here rather than going back into Plot Set-up
6. Scroll down the list of plots to find *Wroxham*
7. Drag and drop *Norwich Road* on to the *Wroxham* plot. *Norwich Road* has now been moved to *Wroxham*!